

CAST Rabbit pAb

Catalog No.: A0097

Basic Information

Catalog No.

A0097

Observed MW

124kDa

Calculated MW

63kDa/71- 84kDa

Category

Primary antibody

Applications

WB, IHC

Cross-Reactivity

Human, Mouse, Rat

Recommended Dilutions

WB	1:200 - 1:2000
IHC	1:50 - 1:200

Contact

 | www.abclonal.com

Background

The protein encoded by this gene is an endogenous calpain (calcium-dependent cysteine protease) inhibitor. It consists of an N-terminal domain L and four repetitive calpain-inhibition domains (domains 1-4), and it is involved in the proteolysis of amyloid precursor protein. The calpain/calpastatin system is involved in numerous membrane fusion events, such as neural vesicle exocytosis and platelet and red-cell aggregation. The encoded protein is also thought to affect the expression levels of genes encoding structural or regulatory proteins. Alternatively spliced transcript variants encoding different isoforms have been described.

Immunogen Information

Gene ID	Swiss Prot
831	P20810

Immunogen

A synthetic peptide corresponding to a sequence within amino acids 600 to the C-terminus of human CAST (NP_001177371.1).

Synonyms

CAST;BS-17;PLACK

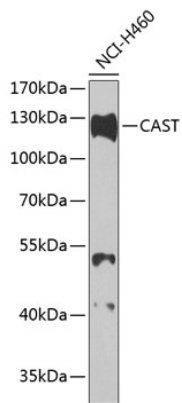
Product Information

Source	Isotype	Purification
Rabbit	IgG	Affinity purification

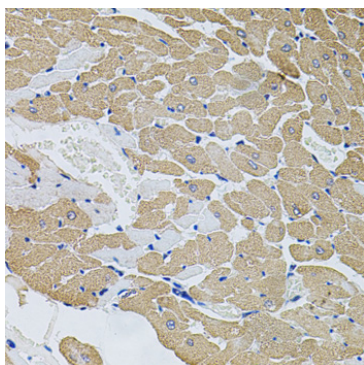
Storage

Store at -20°C. Avoid freeze / thaw cycles.
Buffer: PBS with 0.02% sodium azide,50% glycerol,pH7.3.

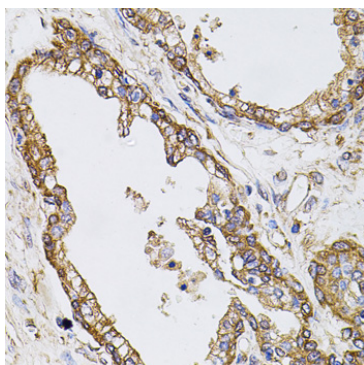
Validation Data



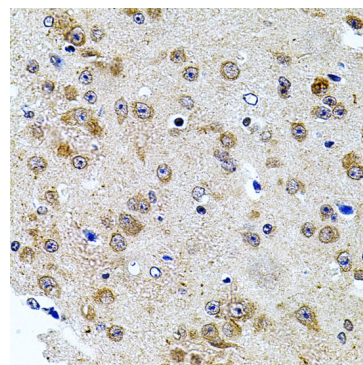
Western blot analysis of extracts of H460 cells, using CAST antibody (A0097) at 1:1000 dilution.
Secondary antibody: HRP Goat Anti-Rabbit IgG (H+L) (AS014) at 1:10000 dilution.
Lysates/proteins: 25ug per lane.
Blocking buffer: 3% nonfat dry milk in TBST.
Detection: ECL Basic Kit (RM00020).
Exposure time: 90s.



Immunohistochemistry of paraffin-embedded rat heart using CAST antibody (A0097) at dilution of 1:100 (40x lens).



Immunohistochemistry of paraffin-embedded human prostate using CAST antibody (A0097) at dilution of 1:100 (40x lens).



Immunohistochemistry of paraffin-embedded mouse brain using CAST antibody (A0097) at dilution of 1:100 (40x lens).