

[KO Validated] RB Rabbit pAb

Catalog No.: A0003 **KO Validated** **2 Publications**

Basic Information

Catalog No.

A0003

Observed MW

110kDa

Calculated MW

106kDa

Category

Primary antibody

Applications

WB, IF

Cross-Reactivity

Human

Recommended Dilutions

WB	1:500 - 1:2000
IF	1:50 - 1:200

Contact

 | www.abclonal.com

Background

The protein encoded by this gene is a negative regulator of the cell cycle and was the first tumor suppressor gene found. The encoded protein also stabilizes constitutive heterochromatin to maintain the overall chromatin structure. The active, hypophosphorylated form of the protein binds transcription factor E2F1. Defects in this gene are a cause of childhood cancer retinoblastoma (RB), bladder cancer, and osteogenic sarcoma.

Immunogen Information

Gene ID	Swiss Prot
5925	P06400

Immunogen

Recombinant fusion protein containing a sequence corresponding to amino acids 701-928 of human RB (NP_000312.2).

Synonyms

OSRC;PPP1R130;RB;p105-Rb;pRb;pp110;RB1;Rb

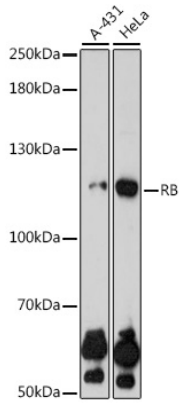
Product Information

Source	Isotype	Purification
Rabbit	IgG	Affinity purification

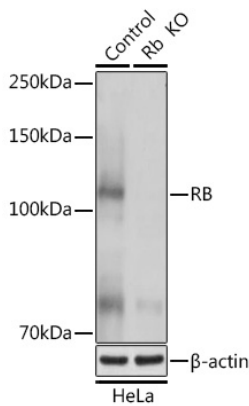
Storage

Store at -20°C. Avoid freeze / thaw cycles.
Buffer: PBS with 0.02% sodium azide, 50% glycerol, pH7.3.

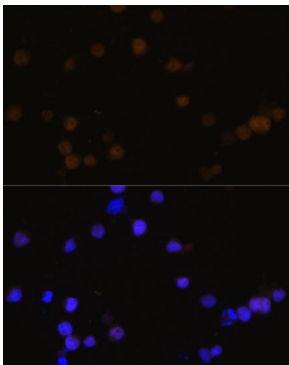
Validation Data



Western blot analysis of extracts of various cell lines, using RB antibody (A0003) at 1:1000 dilution. Secondary antibody: HRP Goat Anti-Rabbit IgG (H+L) (AS014) at 1:10000 dilution. Lysates/proteins: 25ug per lane. Blocking buffer: 3% nonfat dry milk in TBST. Detection: ECL Basic Kit (RM00020). Exposure time: 90s.



Western blot analysis of extracts from normal (control) and RB Rabbit pAb knockout (KO) HeLa cells, using RB Rabbit pAb antibody (A0003) at 1:1000 dilution. Secondary antibody: HRP Goat Anti-Rabbit IgG (H+L) (AS014) at 1:10000 dilution. Lysates/proteins: 25ug per lane. Blocking buffer: 3% nonfat dry milk in TBST. Detection: ECL Basic Kit (RM00020). Exposure time: 90s.



Immunofluorescence analysis of Y79 cells using Rb Polyclonal Antibody (A0003) at dilution of 1:100 (40x lens). Blue: DAPI for nuclear staining.