

RP10164LQ

Leader in Biomolecular Solutions for Life Science



Recombinant Human Polyubiquitinated UbE2S protein

Catalog No.: RP10164LQ **Recombinant**

Sequence Information

Species	Gene ID	Swiss Prot
Human	27338	Q16763

Tags

No Tag

Synonyms

UBE2S; E2-EPF; E2EPF; EPF5; ubiquitin-conjugating enzyme E2 S;E2-EPF;E2EPF;EPF5

Product Information

Source	Purification
<I>E. coli</I>	>90% by SDS-PAGE.

Endotoxin

Formulation

20 mM Tris, 150 mM NaCl, 2 mM βME, 10% Glycerol

Reconstitution

Background

Polyubiquitinated UbE2S (Ubn (K11-linked)-UbE2S) is a polyubiquitinated substrate in which various K11-linked polyUb chains were conjugated on the Ub conjugating enzyme UbE2S. It can be used as a substrate to monitor deubiquitination mediated by deubiquitinating enzymes, or to determine binding of K11-linked polyUb chains by proteins that have Ub interacting domains.

Basic Information

Description

Bio-Activity

Storage

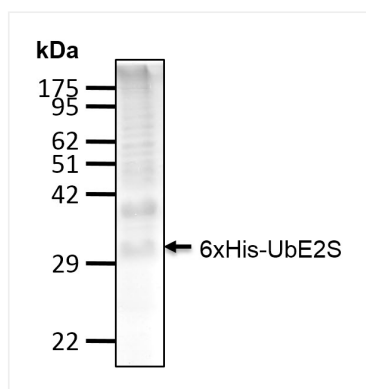
This product is stable at ≤ -70°C for up to 6 months from the date of receipt.
For optimal storage, aliquot into smaller quantities after centrifugation and store at recommended temperature. Avoid repeated freeze/thaw cycles.

Contact



www.abclonal.com

Validation Data



Recombinant human Polyubiquitinated UbE2S protein was determined by SDS-PAGE with Coomassie Blue.