

RP10019LQ

Leader in Biomolecular Solutions for Life Science



Recombinant Human PA28beta/PSME2 protein

Catalog No.: RP10019LQ

Recombinant

Sequence Information

Species	Gene ID	Swiss Prot
Human	5721	Q9UL46

Tags

His Tag

Synonyms

PSME2; PA28B; PA28beta; REGbeta;
proteasome activator subunit
2; PA28B; PA28beta; REGbeta

Product Information

Source	Purification
<I>E. coli</I>	~95% by SDS-PAGE

Endotoxin

Formulation

20 mM Tris, 150 mM NaCl, 2 mM β ME,
10% Glycerol

Reconstitution

Background

PA28 (also called the 11S regulatory complex) is another activator of the 20S proteasome, which assembles on either one or both ends of the 20S proteasome in an ATP-independent manner. PA28 can greatly enhance the peptidase activities of the 20S proteasome, but not for degradation of ubiquitinated proteins. The PA28 activator is a complex of two alternating homologous subunits, PA28 α and PA28 β , which assembles as a hexameric ring with an $\alpha\beta\beta\alpha$ stoichiometry. PA28 α and PA28 β are induced by interferon. Functionally, PA28 enhances the generation of class I peptides for antigen presentation. The third subunit, PA28 γ , was recently identified in the nucleus. Recombinant PA28 α and PA28 β form a heptomeric ring; whereas PA28 γ forms a hexameric ring. All of them can stimulate the peptidase activities of the 20S proteasome.

Basic Information

Description

Bio-Activity

Storage

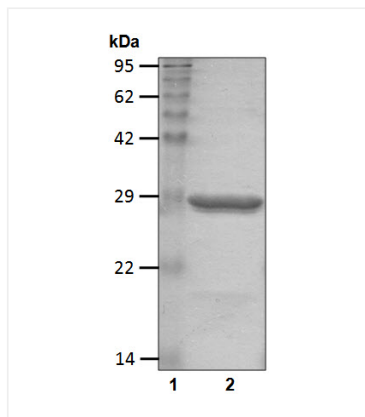
This product is stable at $\leq -70^{\circ}\text{C}$ for up to 6 months from the date of receipt. For optimal storage, aliquot into smaller quantities after centrifugation and store at recommended temperature. Avoid repeated freeze/thaw cycles.

Contact



www.abclonal.com

Validation Data



Recombinant human PA28beta/PSME2 protein was determined by SDS-PAGE with Coomassie Blue.