

RP02524

Leader in Biomolecular Solutions for Life Science



# Recombinant Mouse IGF-I Protein

Catalog No.: RP02524

Recombinant

## Sequence Information

Species	Gene ID	Swiss Prot
Mouse	16000	P09535

### Tags

C-His

### Synonyms

Igf-1;Igf-I;C730016P09Rik; Igf1

## Product Information

Source	Purification
<I>E. coli</I>	> 98% by SDS-PAGE.

### Endotoxin

<0.1EU/μg

### Formulation

Lyophilized from a 0.22 μm filtered solution of PBS, pH 8.0.

### Reconstitution

Centrifuge the vial before opening. Reconstitute to a concentration of 0.1-0.5 mg/mL in sterile distilled water. Avoid vortex or vigorously pipetting the protein. For long term storage, it is recommended to add a carrier protein or stabilizer (e.g. 0.1% BSA, 5% HSA, 10% FBS or 5% Trehalose), and aliquot the reconstituted protein solution to minimize free-thaw cycles.

## Background

Insulin-like growth factor 1 (IGF-1), also called somatomedin C, is a protein that in humans is encoded by the IGF1 gene. IGF-1 is a hormone similar in molecular structure to insulin. It plays an important role in childhood growth and continues to have anabolic effects in adults. A synthetic analog of IGF-1, mecasermin, is used for the treatment of growth failure.

## Basic Information

### Description

Recombinant Mouse IGF-I Protein is produced by Escherichia coli expression system. The target protein is expressed with sequence of Mouse IGF-I fused with polyhistidine tag at the C-terminus

### Bio-Activity

Measured by its ability to inhibit MCF-7 cells proliferation. The ED<sub>50</sub> for this effect is <2 ng/mL. The specific activity of recombinant mouse IGF-I is > 5 x 10<sup>5</sup> IU/mg.

### Storage

Store the lyophilized protein at -20°C to -80°C for long term. After reconstitution, the protein solution is stable at -20°C for 3 months, at 2-8°C for up to 1 week. Avoid repeated freeze/thaw cycles.

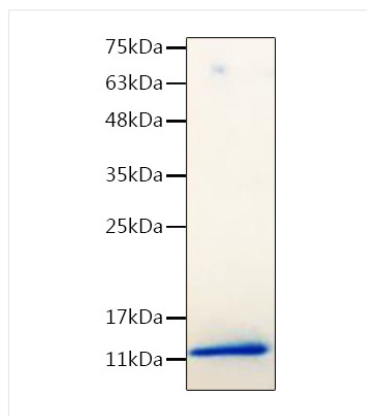
## Contact



[www.abclonal.com](http://www.abclonal.com)

## Validation Data

---



Recombinant Mouse IGF-I Protein was determined by SDS-PAGE with Coomassie Blue, showing bands at 11 kDa.