

RP02516

Leader in Biomolecular Solutions for Life Science



Recombinant Human/Mouse/Rat Inhibin beta A/Activin A Protein

Catalog No.: RP02516

Recombinant

Sequence Information

| Species | Gene ID | Swiss Prot |
|---------|---------|------------|
| Human | 3624 | P08476 |

Tags

C-His

Synonyms

EDF; FRP;INHBA;FRP

Background

Activin and Inhibin are members of the TGF-beta superfamily of cytokines and are involved in a wide range of biological processes including tissue morphogenesis and repair, fibrosis, inflammation, neural development, hematopoiesis, reproductive system function, and carcinogenesis. Activin is strongly expressed in wounded skin, and overexpression of activin in epidermis of transgenic mice improves wound healing and enhances scar formation. Activin also regulates the morphogenesis of branching organs such as the prostate, lung, and kidney. There is also evidence showed that lack of activin during development results in neural developmental defects.

Basic Information

Description

Recombinant Human/Mouse/Rat Inhibin beta A/Activin A Protein is produced by Escherichia coli expression system. The target protein is expressed with sequence of Human Activin A fused with polyhistidine tag at the C-terminus

Bio-Activity

Measured by its ability to inhibit hemoglobin expression in K562 cells. The ED₅₀ for this effect is <0.85 ng/mL. The specific activity of recombinant human Activin A is approximately >1.4 x 10³ IU/mg.

Storage

Store the lyophilized protein at -20°C to -80°C for long term. After reconstitution, the protein solution is stable at -20°C for 3 months, at 2-8°C for up to 1 week. Avoid repeated freeze/thaw cycles.

Product Information

| Source | Purification |
|----------------|--------------------|
| <I>E. coli</I> | > 95% by SDS-PAGE. |

Endotoxin

<0.1EU/μg

Formulation

Lyophilized from a 0.22 μm filtered solution of 0.1% sarkosyl in 1X PBS, pH 8.0.

Reconstitution

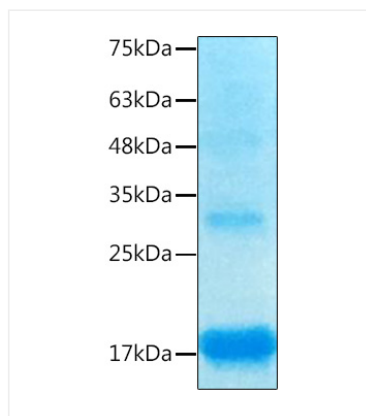
Centrifuge the vial before opening. Reconstitute to a concentration of 0.1-0.5 mg/mL in sterile distilled water. Avoid vortex or vigorously pipetting the protein. For long term storage, it is recommended to add a carrier protein or stabilizer (e.g. 0.1% BSA, 5% HSA, 10% FBS or 5% Trehalose), and aliquot the reconstituted protein solution to minimize free-thaw cycles.

Contact



www.abclonal.com

Validation Data



Recombinant Human Inhibin beta A/Activin A Protein was determined by SDS-PAGE with Coomassie Blue, showing bands at 17 kDa.