

RP02514

Leader in Biomolecular Solutions for Life Science



# Recombinant Human TGF-beta 1 Protein

Catalog No.: RP02514

Recombinant

## Sequence Information

Species	Gene ID	Swiss Prot
Human	7040	P01137

### Tags

C-His

### Synonyms

TGFB1; CED; DPD1; LAP; TGFB; TGFbeta; transforming growth factor beta-1; TGF-beta 1; CED; DPD1; LAP; TGFB; TGFbeta; TGF-β

## Product Information

### Source

E. coli

### Purification

> 98% by SDS-PAGE.

### Endotoxin

<0.1 EU/μg

### Formulation

Lyophilized from a 0.22 μm filtered solution of PBS, pH 8.0.

### Reconstitution

Reconstitute to a concentration of 0.1-0.5 mg/mL in sterile distilled water.

## Background

Transforming growth factor beta 1 or TGF-β1 is a polypeptide member of the transforming growth factor beta superfamily of cytokines. It is a secreted protein that performs many cellular functions, including the control of cell growth, cell proliferation, cell differentiation, and apoptosis. In humans, TGF-β1 is encoded by the TGFB1 gene.

## Basic Information

### Description

Recombinant Human TGF beta 1 Protein is produced by Escherichia coli expression system. The target protein is expressed with sequence of Human TGF beta 1 fused with polyhistidine tag at the C-terminus

### Bio-Activity

Measured by its ability to inhibit the IL-4 dependent proliferation in HT-2 cells. The ED<sub>50</sub> for this effect is <0.1 ng/mL. The specific activity of recombinant human TGF beta 1 is approximately >5 x 10<sup>7</sup> IU/mg. Measured by its ability to inhibit proliferation in MCF-7 cells The ED<sub>50</sub> for this effect is <3.2 ng/mL.

### Storage

Store the lyophilized protein at -20°C to -80°C for long term. After reconstitution, the protein solution is stable at -20°C for 3 months, at 2-8°C for up to 1 week. Avoid repeated freeze/thaw cycles.

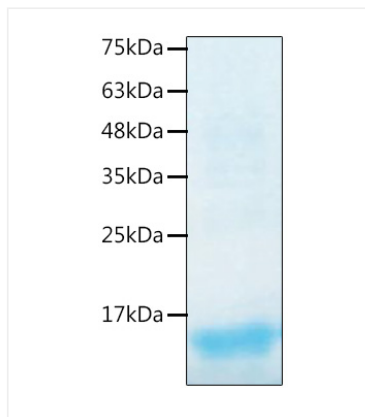
## Contact



[www.abclonal.com](http://www.abclonal.com)

## Validation Data

---



Recombinant Human TGF-beta 1 Protein was determined by SDS-PAGE with Coomassie Blue, showing bands at 15 kDa.