

RP02467

Leader in Biomolecular Solutions for Life Science



Recombinant Human PD-1/PDCD1/CD279 Protein

Catalog No.: RP02467

Recombinant

Sequence Information

Species	Gene ID	Swiss Prot
Human	5133	Q8IX89(Q15116)

Tags

C-mFc

Synonyms

PDCD1; CD279; PD-1; PD1; SLEB2; hPD-1; hPD-I; hSLE1; programmed cell death 1; PD-1; CD279; PD1; SLEB2; hPD-1; hPD-I; hSLE1; PD-1/CD279

Product Information

Source

HEK293 cells

Purification

> 95% by Tris-Bis PAGE; > 95% by SEC-HPLC

Endotoxin

< 1 EU/μg of the protein by LAL method.

Formulation

Lyophilized from a 0.22 μm filtered solution of PBS, pH 7.4.

Reconstitution

Centrifuge the tube before opening. Reconstitute to a concentration of 0.1-0.5 mg/mL in sterile distilled water. Avoid vortex or vigorously pipetting the protein. For long term storage, it is recommended to add a carrier protein or stabilizer (e.g. 0.1% BSA, 5% HSA, 10% FBS or 5% Trehalose), and aliquot the reconstituted protein solution to minimize freeze-thaw cycles.

Background

Basic Information

Description

Recombinant Human PD1 Protein is produced by Expi293 expression system. The target protein is expressed with sequence (Leu25-Gln167) of Human PD1 fused with mFc at the C-terminal.

Bio-Activity

Immobilized Human PD1 at 0.5 μg/mL (100 μL/Well). Dose response curve for Biotinylated Anti-PD1 Ab. with the EC₅₀ of 68 ng/mL determined by ELISA.

Storage

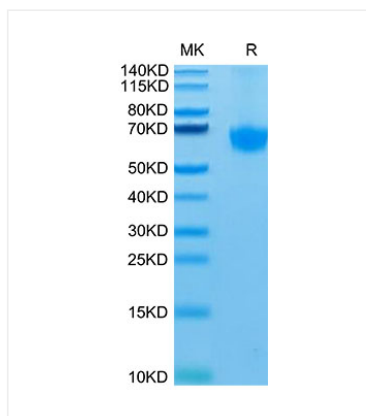
Store the lyophilized protein at -20°C to -80°C for long term. After reconstitution, the protein solution is stable at -20°C for 3 months, at 2-8°C for up to 1 week. Avoid repeated freeze/thaw cycles.

Contact

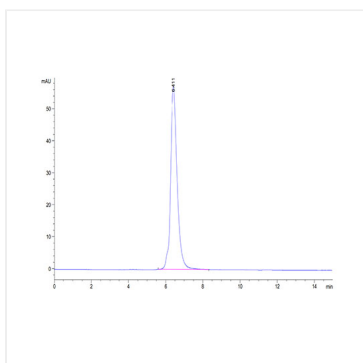


www.abclonal.com

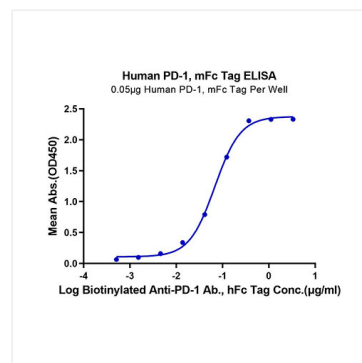
Validation Data



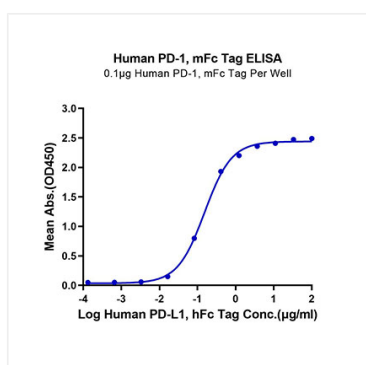
Human PD-1 on Tris-Bis PAGE under reduced condition. The purity is greater than 95%.



The purity of Human PD-1 is greater than 95% as determined by SEC-HPLC.



Immobilized Human PD-1, mFc Tag at 0.5 μg/ml (100 μl/Well). Dose response curve for Biotinylated Anti-PD-1 Ab., hFc Tag with the EC_{50} of 68 ng/ml determined by ELISA.



Immobilized Human PD-1, mFc Tag at 1 μg/ml (100 μl/well) on the plate. Dose response curve for Human PD-L1, hFc Tag with the EC_{50} of 0.15 μg/ml determined by ELISA.