

RP02260

Leader in Biomolecular Solutions for Life Science



Recombinant Human TIM-3/HAVCR2/CD366 Protein

Catalog No.: RP02260

Recombinant

Sequence Information

Species	Gene ID	Swiss Prot
Human	84868	Q8TDQ0

Tags

C-mFc&His

Synonyms

HAVCR2;CD366;HAVcr-2;KIM-3;TIM3;TIMD-3;TIMD3;Tim-3; CD366; KIM-3; SPTCL; TIMD3; Tim-3; TIMD-3; HAVcr-2

Product Information

Source	Purification
HEK293 cells	> 95% by SDS-PAGE.

Endotoxin

Formulation

Lyophilized from sterile PBS, pH 7.4. Normally 5 % - 37 % trehalose is added as protectants before lyophilization.

Reconstitution

Reconstitute with deionized water

Background

The protein encoded by this gene belongs to the immunoglobulin superfamily, and TIM family of proteins. CD4-positive T helper lymphocytes can be divided into types 1 (Th1) and 2 (Th2) on the basis of their cytokine secretion patterns. Th1 cells are involved in cell-mediated immunity to intracellular pathogens and delayed-type hypersensitivity reactions, whereas, Th2 cells are involved in the control of extracellular helminthic infections and the promotion of atopic and allergic diseases. This protein is a Th1-specific cell surface protein that regulates macrophage activation, and inhibits Th1-mediated auto- and alloimmune responses, and promotes immunological tolerance.

Basic Information

Description

Recombinant Human TIM-3/HAVCR2/CD366 Protein is produced by HEK293 cells expression system. The target protein is expressed with sequence (TIM3(Ser22-Gly202)&mFc(Pro99-Lys330)) of human HAVCR2 (Accession #) fused with a Fc and His Tag at the C-terminal. .

Bio-Activity

ELISA plate pre-coated by 2 µg/mL (100 µL/well) Human TIM3, mFc-His tagged protein can bind Anti-TIM3 Neutralizing antibody in a linear range of 0.12-6.89 ng/mL.

Storage

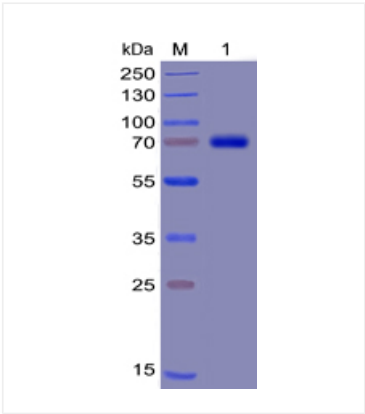
Store the lyophilized protein at -20°C to -80°C for long term. After reconstitution, the protein solution is stable at -20°C for 3 months, at 2-8°C for up to 1 week. Avoid repeated freeze/thaw cycles.

Contact

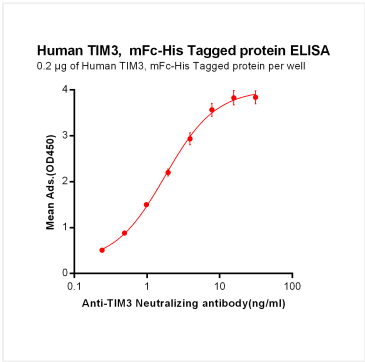


www.abclonal.com

Validation Data



Recombinant Human TIM-3/HAVCR2/CD366 Protein was determined by SDS-PAGE with Coomassie Blue, showing bands at 47.5 kDa



ELISA plate pre-coated by 2 µg/ml (100 µl/well) Human TIM3, mFc-His tagged protein can bind Anti-TIM3 Neutralizing antibody in a linear range of 0.12-6.89 ng/ml.