

RP02252

Leader in Biomolecular Solutions for Life Science



Recombinant Human TNFSF13B/BAFF/CD257 Protein

Catalog No.: RP02252

Recombinant

Sequence Information

Species	Gene ID	Swiss Prot
Human	10673	Q9Y275

Tags

N-hFc

Synonyms

TNFSF13B;BAFF;BLYS;CD257;DTL;TALL-1;TALL1;THANK;TNFSF20;TNLG7A;ZTNF4

Product Information

Source	Purification
HEK293 cells	> 95% by SDS-PAGE.

Endotoxin

Formulation

Lyophilized from sterile PBS, pH 7.4. Normally 5 % - 103 % trehalose is added as protectants before lyophilization.

Reconstitution

Reconstitute with deionized water

Background

The protein encoded by this gene is a cytokine that belongs to the tumor necrosis factor (TNF) ligand family. This cytokine is a ligand for receptors TNFRSF13B/TACI, TNFRSF17/BCMA, and TNFRSF13C/BAFFR. This cytokine is expressed in B cell lineage cells, and acts as a potent B cell activator. It has been also shown to play an important role in the proliferation and differentiation of B cells. Alternatively spliced transcript variants encoding distinct isoforms have been identified.

Basic Information

Description

Recombinant Human TNFSF13B/BAFF/CD257 Protein is produced by HEK293 cells expression system. The target protein is expressed with sequence (hFc(Glu99-Ala330)&BAFF(Ala134-Leu285)) of human TNFSF13B (Accession #) fused with a Fc Tag at the N-terminal. .

Bio-Activity

ELISA plate pre-coated by 2 µg/mL (100 µL/well) Human BAFF, hFc tagged protein can bind Human BCMA, mFc tagged protein in a linear range of 0.03-15.625 ng/mL. ELISA plate pre-coated by 2 µg/mL (100 µL/well) Human BAFF, hFc tagged protein can bind Human BAFF-R, mFc tagged protein in a linear range of 0.488-250.0 ng/mL.

Storage

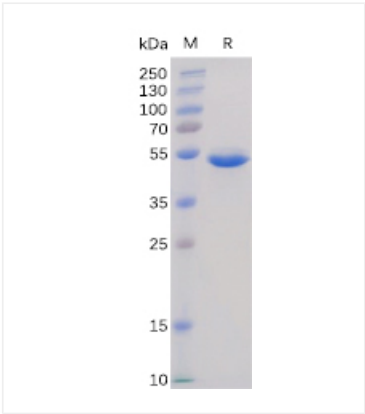
Store the lyophilized protein at -20°C to -80°C for long term. After reconstitution, the protein solution is stable at -20°C for 3 months, at 2-8°C for up to 1 week. Avoid repeated freeze/thaw cycles.

Contact

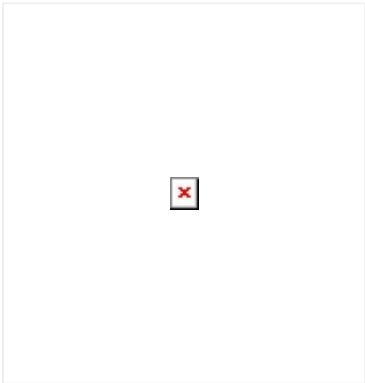


www.abclonal.com

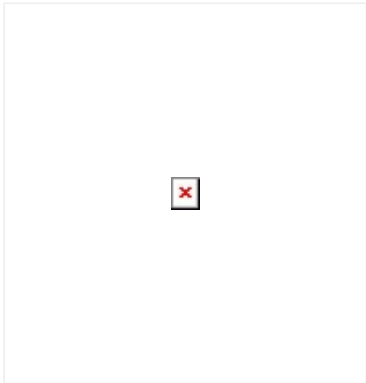
Validation Data



Recombinant Human TNFSF13B/BAFF/CD257 Protein was determined by SDS-PAGE with Coomassie Blue, showing bands at 50-55 kDa



ELISA plate pre-coated by 2 µg/ml (100 µl/well) Human BAFF, hFc tagged protein can bind Human BAFF-R, mFc tagged protein in a linear range of 0.488-250.0 ng/ml.



ELISA plate pre-coated by 2 µg/ml (100 µl/well) Human BAFF, hFc tagged protein can bind Human BCMA, mFc tagged protein in a linear range of 0.03-15.625 ng/ml.