

RP02236

Leader in Biomolecular Solutions for Life Science



# Recombinant Human IL6 Protein

Catalog No.: RP02236

Recombinant

## Sequence Information

Species	Gene ID	Swiss Prot
Human	3569	P05231

### Tags

C-Fc & His

### Synonyms

IL6;BSF-2;BSF2;CDF;HGF;HSF;IFN-beta-2;IFNB2;IL-6

## Product Information

Source	Purification
HEK293 cells	> 95% by SDS-PAGE.

### Endotoxin

### Formulation

Lyophilized from sterile PBS, pH 7.4. Normally 5 % - 39 % trehalose is added as protectants before lyophilization.

### Reconstitution

Reconstitute with deionized water

## Background

This gene encodes a cytokine that functions in inflammation and the maturation of B cells. In addition, the encoded protein has been shown to be an endogenous pyrogen capable of inducing fever in people with autoimmune diseases or infections. The protein is primarily produced at sites of acute and chronic inflammation, where it is secreted into the serum and induces a transcriptional inflammatory response through interleukin 6 receptor, alpha. The functioning of this gene is implicated in a wide variety of inflammation-associated disease states, including susceptibility to diabetes mellitus and systemic juvenile rheumatoid arthritis. Alternative splicing results in multiple transcript variants.

## Basic Information

### Description

Recombinant Human IL6 Protein is produced by HEK293 cells expression system. The target protein is expressed with sequence (IL6(Val30-Met212)&mFc(Pro99-Lys330)) of human IL6 (Accession #) fused with a Fc and His Tag at the C-terminal. .

### Bio-Activity

ELISA plate pre-coated by 2 µg/ml (100 µl/well) Human IL6, mFc-His tagged protein can bind Anti-IL6 Neutralizing antibody in a linear range of 7.81-386.8 ng/ml.

### Storage

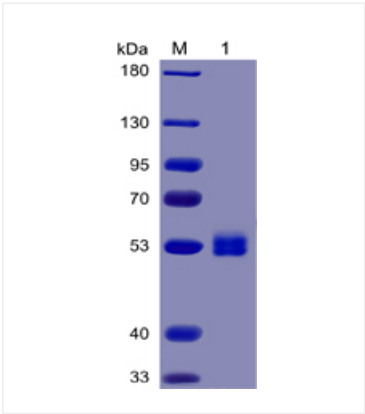
Store the lyophilized protein at -20°C to -80°C for long term. After reconstitution, the protein solution is stable at -20°C for 3 months, at 2-8°C for up to 1 week. Avoid repeated freeze/thaw cycles.

## Contact

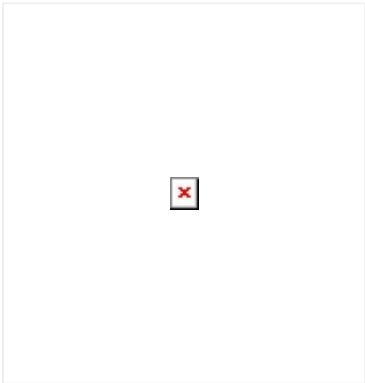


[www.abclonal.com](http://www.abclonal.com)

Validation Data



Recombinant Human IL6 Protein was determined by SDS-PAGE with Coomassie Blue, showing bands at 47.9 kDa



ELISA plate pre-coated by 2 µg/ml (100 µl/well) Human IL6, mFc-His tagged protein can bind Anti-IL6 Neutralizing antibody in a linear range of 7.81-386.8 ng/ml.