

RP02231

Leader in Biomolecular Solutions for Life Science



# Recombinant Human Flt3 ligand/Flt3L Protein

Catalog No.: RP02231

Recombinant

## Sequence Information

Species	Gene ID	Swiss Prot
Human	2323	P49771

### Tags

C-mFc&His

### Synonyms

FL;FLT3L;FLT3LG;FLT3LG

## Product Information

Source	Purification
HEK293 cells	> 95% by SDS-PAGE.

### Endotoxin

### Formulation

Lyophilized from sterile PBS, pH 7.4. Normally 5 % - 40 % trehalose is added as protectants before lyophilization.

### Reconstitution

Reconstitute with deionized water

## Background

FMS-like tyrosine kinase 3 ligand (Flt-3 Ligand) is also known as FL, Flt3L and FLT3LG, is an  $\alpha$ -helical cytokine that promotes the differentiation of multiple hematopoietic cell lineages. FLT3LG is expressed as a noncovalently linked dimer by T cells and bone marrow and thymic fibroblasts. Each 36 kDa chain carries approximately 12 kDa of N- and O- linked carbohydrates. FLT3LG is structurally homologous to stem cell factor (SCF) and colony stimulating factor 1 (CSF-1). FLT3LG acts as a growth factor that increases the number of immune cells by activating the hematopoietic progenitors. It also induces the mobilization of the hematopoietic progenitors and stem cells in vivo which may help the system to kill cancer cells. FLT3LG induces the expansion of monocytes and immature dendritic cells as well as early B cell lineage differentiation. FLT3LG cooperates with IL2, IL6, IL7, and IL15 to induce NK cell development and with IL3, IL7 and IL11 to induce terminal B cell maturation. Animal studies also show FLT3LG to reduce the severity of experimentally induced allergic inflammation. FLT3LG is crucial for steady-state pDC and cDC development. A lack of FLT3L results in low levels of DCs.

## Basic Information

### Description

Recombinant Human Flt3 ligand/Flt3L Protein is produced by HEK293 cells expression system. The target protein is expressed with sequence (FLT3 Ligand(Thr27-Pro185)&mFc(Pro99-Lys330)) of human FLT3LG (Accession #) fused with a Fc and His Tag at the C-terminal. .

### Bio-Activity

ELISA plate pre-coated by 2  $\mu$ g/mL (100  $\mu$ L/well) Human FLT3LG, mFc-His tagged protein can bind Human FLT3, hFc-His tagged protein in a linear range of 0.128-10.02 ng/mL.

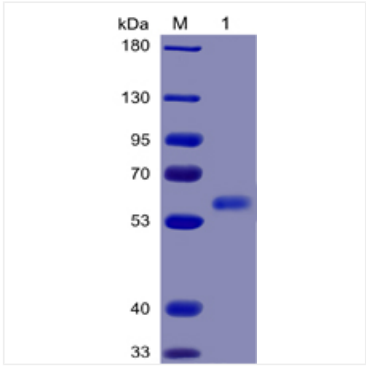
### Storage

Store the lyophilized protein at -20°C to -80°C for long term. After reconstitution, the protein solution is stable at -20°C for 3 months, at 2-8°C for up to 1 week. Avoid repeated freeze/thaw cycles.

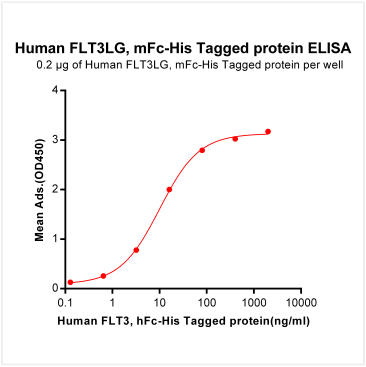
## Contact



[www.abclonal.com](http://www.abclonal.com)



Recombinant Human Flt3 ligand/Flt3L Protein was determined by SDS-PAGE with Coomassie Blue, showing bands at 45.6 kDa



ELISA plate pre-coated by 2 µg/ml (100 µl/well) Human FLT3LG, mFc-His tagged protein can bind Human FLT3, hFc-His tagged protein in a linear range of 0.128-10.02 ng/ml.