

RP02206

Leader in Biomolecular Solutions for Life Science



Recombinant Human CD3 epsilon/CD3E(C119S,C222S) Protein

Catalog No.: RP02206

Recombinant

Sequence Information

Species	Gene ID	Swiss Prot
Human	916	P07766

Tags
C-hFc

Synonyms

CD3E;IMD18;T3E;TCRE;CD3e molecule

Product Information

Source	Purification
HEK293 cells	> 95% as determined by SDS-PAGE

Endotoxin

< 1EU per µg by the LAL method.

Formulation

Lyophilized from 0.22µm filtered solution in PBS (pH 7.4). Normally 5 % trehalose is added as protectant before lyophilization.

Reconstitution

Centrifuge tubes before opening.
Reconstituting to a concentration more than 100 µg/ml is recommended.
Dissolve the lyophilized protein in distilled water.

Background

T-cell surface glycoprotein CD3 epsilon & CD3 gamma chain, also known as CD3E & CD3G , are single-pass type I membrane proteins. When antigen presenting cells (APCs) activate T-cell receptor (TCR), TCR-mediated signals are transmitted across the cell membrane by the CD3 chains CD3D, CD3E, CD3G and CD3Z. All CD3 chains contain immunoreceptor tyrosine-based activation motifs (ITAMs) in their cytoplasmic domain.

Basic Information

Description

Recombinant Human CD3 epsilon/CD3E(C119S,C222S) Protein is produced by mammalian expression system. The target protein is expressed with sequence (Asp23-Asp126(C119S,C222S)) of human CD3E (Accession #) fused with a hFc tag at the C-terminus.

Bio-Activity

Immobilized Human CD3 epsilon at 1 µg/mL (100 µL/Well). Dose response curve for Anti-CD3 Ab. with the EC₅₀ of 0.1 µg/mL determined by ELISA.

Storage

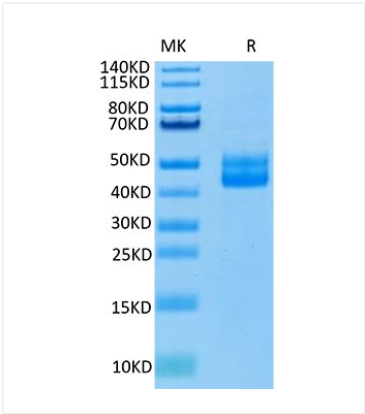
Store the lyophilized protein at -20°C to -80°C for long term. After reconstitution, the protein solution is stable at -20°C for 3 months, at 2-8°C for up to 1 week. Avoid repeated freeze/thaw cycles.

Contact

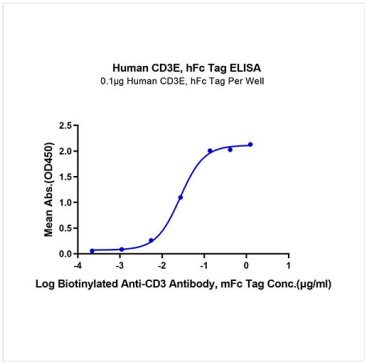


www.abclonal.com

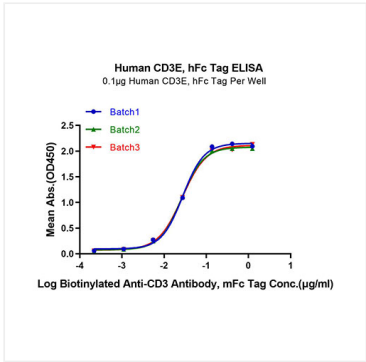
Validation Data



Human CD3E/CD3 epsilon monomer on Tris-Bis PAGE under reduced condition. The purity is greater than 95%.



Immobilized Human CD3E at 1µg/ml (100µl/Well) on the plate. Dose response curve for Biotinylated Anti-CD3 Antibody, mFc Tag with the EC₅₀ of 26.7ng/ml determined by ELISA.



Immobilized Human CD3E at 1µg/ml (100µl/Well) on the plate. Dose response curve for Biotinylated Anti-CD3 Antibody, mFc Tag with the EC₅₀ of 27.7ng/ml / 26ng/ml / 26.7ng/ml determined by ELISA.