

RP02019

Leader in Biomolecular Solutions for Life Science



Recombinant Human PD-1/PDCD1/CD279 Protein

Catalog No.: RP02019

Recombinant

Sequence Information

Species	Gene ID	Swiss Prot
Human	5133	Q8IX89

Tags

C-His

Synonyms

PDCD1; CD279; PD-1; PD1; SLEB2;
hPD-1; hPD-I; hSLE1; programmed cell
death
1;PD-1;CD279;PD1;SLEB2;hPD-1;hPD-
I;hSLE1;PD-1/CD279

Product Information

Source	Purification
HEK293 cells	> 95% by SDS- PAGE.

Endotoxin

< 0.1 EU/μg of the protein by LAL
method.

Formulation

Lyophilized from 0.22μm filtered solution
in PBS, pH 7.4. Contact us for customized
product form or formulation.

Reconstitution

Centrifuge the tube before opening.
Reconstitute to a concentration of
0.1-0.5 mg/mL in sterile distilled water.
Avoid vortex or vigorously pipetting the
protein. For long term storage, it is
recommended to add a carrier protein or
stabilizer (e.g. 0.1% BSA, 5% HSA, 10%
FBS or 5% Trehalose), and aliquot the
reconstituted protein solution to
minimize freeze-thaw cycles.

Background

Programmed cell death protein 1, also known as PD-1 and CD279, is a protein found on the surface of cells that has a role in regulating the immune system's response to the cells of the human body by down-regulating the immune system and promoting self tolerance by suppressing T cell inflammatory activity.

Basic Information

Description

Recombinant Human BTLA Protein is produced by HEK293 expression system. The target protein is expressed with sequence (Leu25-Gln167) of human PD-1 (Accession #Q8IX89) fused with a 6xHis tag at the C-terminus.

Bio-Activity

Immobilized Human PD1 at 0.5 μg/mL (100 μL/well), dose response curve for Anti-PD1 Ab (BMS) with the EC₅₀ of 57 ng/mL determined by ELISA.

Storage

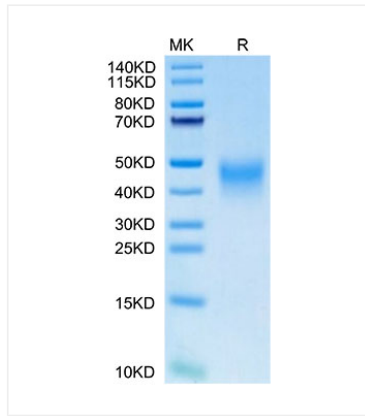
Store the lyophilized protein at -20°C to -80 °C for long term. After reconstitution, the protein solution is stable at -20 °C for 3 months, at 2-8 °C for up to 1 week. Avoid repeated freeze/thaw cycles.

Contact

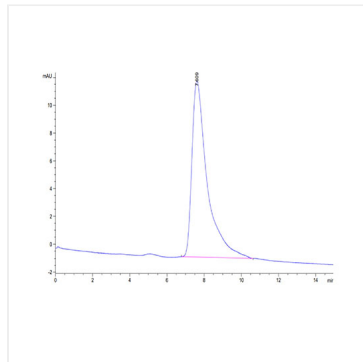


www.abclonal.com

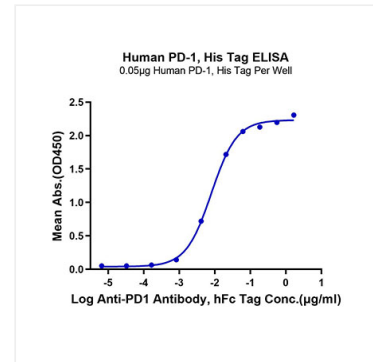
Validation Data



Human PD-1 on Tris-Bis PAGE under reduced. The purity is greater than 95%.



The purity of Human PD-1 is greater than 95% as determined by SEC-HPLC.



Immobilized Human PD-1, His Tag at 0.5 μg/ml (100 μl/Well). Dose response curve for Anti-PD-1 Antibody, hFc Tag with the EC₅₀ of 9.6 ng/ml determined by ELISA.