

Recombinant Human TNFRSF13C/BAFF-R/CD268 Protein

Catalog No.: RP02004 **Recombinant**

Sequence Information

Species	Gene ID	Swiss Prot
Human	115650	Q96RJ3-1

Tags

C-His

Synonyms

TNFRSF13C;BAFF-R;BAFFR;BROMIX;CD268;CVID4;prolixin

Product Information

Source	Purification
HEK293 cells	> 95% by SDS-PAGE.

Endotoxin

< 0.1 EU/μg of the protein by LAL method.

Formulation

Lyophilized from a 0.2 μm filtered solution of PBS, pH 7.4. Contact us for customized product form or formulation.

Reconstitution

Reconstitute to a concentration of 0.1-0.5 mg/mL in sterile distilled water.

Background

BAFF binds to three TNF receptor superfamily members: B-cell maturation antigen (BCMA/TNFRSF17), transmembrane activator and calcium-modulator and cyclophilin ligand interactor (TACI/TNFRSF13B) and BAFF receptor (BAFF R/BR3/TNFRSF13C). These receptors are type III transmembrane proteins that lack a signal peptide. Whereas TACI and BCMA bind BAFF and another TNF superfamily ligand, APRIL (a proliferation-inducing ligand), BAFF R selectively binds BAFF.

Basic Information

Description

Recombinant Human Siglec-2/CD22 Protein is produced by mammalian expression system. The target protein is expressed with sequence (Ser7-Ala71) of human BAFFR (Accession #Q96RJ3-1) fused with a 6xHis tag at the C-terminus.

Bio-Activity

Immobilized Human BAFFR at 1 μg/mL (100 μL/well), dose response curve for Human BAFF with the EC₅₀ of 0.15 μg/mL determined by ELISA. Immobilized Human BAFFR at 0.5 μg/mL (100 μL/well), dose response curve for Human BAFFR Ab with the EC₅₀ of 5.1 ng/mL determined by ELISA.

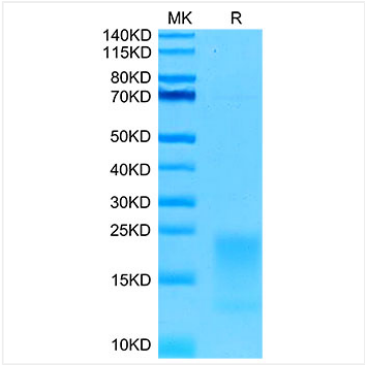
Storage

Store the lyophilized protein at -20°C to -80 °C for long term. After reconstitution, the protein solution is stable at -20 °C for 3 months, at 2-8 °C for up to 1 week. Avoid repeated freeze/thaw cycles.

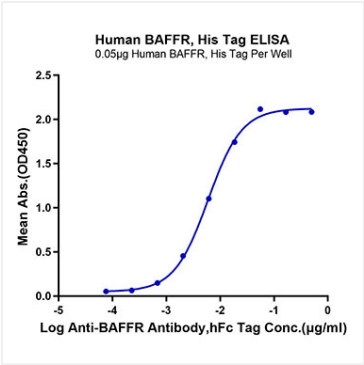
Contact

 | www.abclonal.com

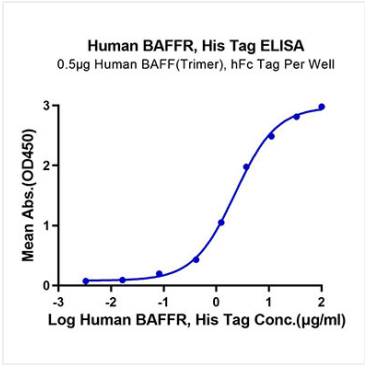
Validation Data



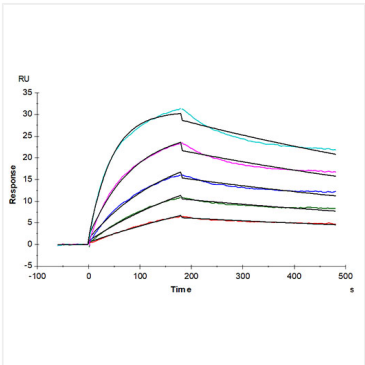
Human BAFFR on Tris-Bis PAGE under reduced conditions. The purity is greater than 95%.



Immobilized Human BAFFR, His Tag at 0.5µg/ml (100µl/Well). Dose response curve for Human BAFFR Antibody, hFc Tag with the EC₅₀ of 6.0ng/ml determined by ELISA.



Immobilized Human BAFF (Trimer) , hFc Tag at 5µg/ml (100µl/Well) on the plate. Dose response curve for Human BAFFR, His Tag with the EC₅₀ of 2.3µg/ml determined by ELISA.



Human BAFFR, His Tag captured on CM5 Chip via anti-his antibody can bind Human BAFF Trimer, hFc-Flag Tag with an affinity constant of 1.21 nM as determined in SPR assay (Biacore T200).