

Recombinant Mouse CD150/SLAM Protein

Catalog No.: RP00757 **Recombinant**

Sequence Information

Species	Gene ID	Swiss Prot
Mouse	27218	Q9QUM4

Tags

C-6×His

Synonyms

signaling lymphocytic activation molecule; SLAM family member 1; CD150 antigen; CD150; SLAMF1; SLAM

Product Information

Source	Purification
HEK293 cells	> 95% by SDS-PAGE.

Endotoxin

< 1 EU/μg of the protein by LAL method.

Formulation

Lyophilized from a 0.2 μm filtered solution of PBS, pH 7.4. Contact us for customized product form or formulation.

Reconstitution

Reconstitute to a concentration of 0.1-0.5 mg/mL in sterile distilled water.

Background

Signaling lymphocyte activation molecule (SLAM), is a self-ligand glycoprotein which exists not only found on the surface of activated and memory T cells, but also on the surface of activated B cells, dendritic cells, and macrophages. SLAM consists of a extracellular domain (ECD) with two Ig-like domains, transmembrane segment, and cytoplasmic domain with three immunoreceptor tyrosine switch motifs (ITSM). SLAM is thought to play an important role in adhesion between T cells and APCs and has been shown to act as a coreceptor in TCR-dependent responses. SLAM, together with CD46, is one of the two receptors for measles virus. SLAM is a cell surface receptor that, like the B cell receptor, CD40, and CD95, can transmit positive or negative signals. SLAM can associate with the SH2-containing inositol phosphatase (SHIP), the SH2-containing protein tyrosine phosphatase (SHP-2), and the adaptor protein SH2 domain protein 1A. It's upregulated on activated B cells and CD4+ and CD8+ T cells, but downregulated on Th2 polarized cells. Also, it can inhibit antigen receptor-mediated production of IFN-gamma, but not IL-2, in CD4-/CD8- T-cells.

Basic Information

Description

Recombinant Mouse CD150/SLAM Protein is produced by Human Cells expression system. The target protein is expressed with sequence (Thr25-Pro242) of mouse CD150/SLAM (Accession #Q9QUM4) fused with a 6×His tag at the C-terminus.

Bio-Activity

Storage

Store the lyophilized protein at -20°C to -80°C for long term.

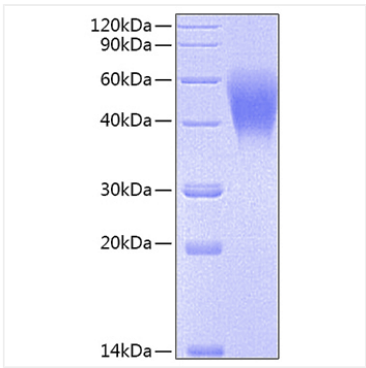
After reconstitution, the protein solution is stable at -20 °C for 3 months, at 2-8 °C for up to 1 week.

Avoid repeated freeze/thaw cycles.

Contact

 | www.abclonal.com

Validation Data



Recombinant Mouse CD150/SLAM Protein was determined by SDS-PAGE under reducing conditions with Coomassie Blue.