

RP00749

Leader in Biomolecular Solutions for Life Science



Recombinant Human Ephrin A Receptor 2/EphA2 Protein

Catalog No.: RP00749

Recombinant

Sequence Information

Species	Gene ID	Swiss Prot
Human	1969	P29317

Tags

C-6×His

Synonyms

ARCC2;CTPA;CTPP1;CTRCT6;ECK;EPHA2

Product Information

Source

HEK293 cells

Purification

> 95% by SDS-PAGE.

Endotoxin

< 1 EU/μg of the protein by LAL method.

Formulation

Lyophilized from a 0.2 μm filtered solution of PBS, pH7.4. Contact us for customized product form or formulation.

Reconstitution

Reconstitute to a concentration of 0.1-0.5 mg/mL in sterile distilled water.

Background

EphA2 is a member of the Eph receptor tyrosine kinase family which binds Ephrins A1, 2, 3, 4, and 5. Receptor tyrosine kinase which binds promiscuously membrane-bound ephrin-A family ligands residing on adjacent cells, leading to contact-dependent bidirectional signaling into neighboring cells. The signaling pathway downstream of the receptor is referred to as forward signaling while the signaling pathway downstream of the ephrin ligand is referred to as reverse signaling. EphA2 becomes autophosphorylated following ligand binding and then interacts with SH2 domain-containing PI3-kinase to activate MAPK pathways. Reverse signaling is also propagated through the Ephrin ligand. Transcription of EphA2 is dependent on the expression of E-Cadherin, and can be induced by p53 family transcription factors. EphA2 is upregulated in breast, prostate, and colon cancer vascular endothelium. Its ligand, EphrinA1, is expressed by the local tumor cells. In some cases, EphA2 and EphrinA1 are expressed on the same blood vessels. EphA2 signaling cooperates with VEGF receptor signaling in promoting endothelial cell migration.

Basic Information

Description

Recombinant Human Ephrin A Receptor 2/EphA2 Protein is produced by Human Cells expression system. The target protein is expressed with sequence (Ala24-Asn534) of human Ephrin A Receptor 2/EphA2 (Accession #P29317) fused with a 6×His tag at the C-terminus.

Bio-Activity

Storage

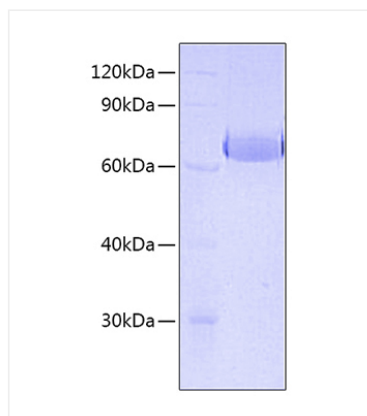
Store the lyophilized protein at -20°C to -80 °C for long term. After reconstitution, the protein solution is stable at -20 °C for 3 months, at 2-8 °C for up to 1 week. Avoid repeated freeze/thaw cycles.

Contact



www.abclonal.com

Validation Data



Recombinant Human Ephrin A Receptor 2/EphA2 Protein was determined by SDS-PAGE under reducing conditions with Coomassie Blue.