

Recombinant Rat IgG2A Fc/Igg-2a Protein

Catalog No.: RP00719 **Recombinant**

Sequence Information

Species	Gene ID	Swiss Prot
Rat		P20760

Tags

No tag

Synonyms

Ig gamma-2A chain C region; Igg-2a

Product Information

Source	Purification
HEK293 cells	> 95% by SDS-PAGE.

Endotoxin

< 1 EU/μg of the protein by LAL method.

Formulation

Lyophilized from a 0.2 μm filtered solution of 20mM Tris, pH 8.5. Contact us for customized product form or formulation.

Reconstitution

Reconstitute to a concentration of 0.1-0.5 mg/mL in sterile distilled water.

Background

Immunoglobulin G (IgG) is a type of antibody composed of four peptide chains—two identical heavy chains and two identical light chains arranged in a Y-shape typical of antibody monomers. There are four IgG subclasses (IgG1, 2, 3, and 4) in humans, named in order of their abundance in serum. The IgG2a isotype was able to interact very efficiently with FcγR, and share approximately 64-78% amino acid sequence identity with IgG1 and IgG2b in the heavy chain constant region domains, CH1, CH2 and CH3, which cause the difference in the interaction with complement, NK and mast cells, induction or inhibition by specific cytokines, and ability to cross the placenta.

Basic Information

Description

Recombinant Rat IgG2A Fc/Igg-2a Protein is produced by Human cells expression system. The target protein is expressed with sequence (Val98-Lys322) of rat IgG2A Fc/Igg-2a (Accession #P20760).

Bio-Activity

Storage

Store the lyophilized protein at -20°C to -80 °C for long term.

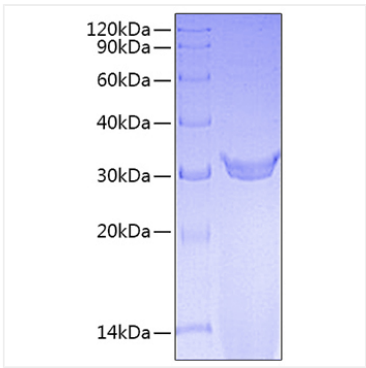
After reconstitution, the protein solution is stable at -20 °C for 3 months, at 2-8 °C for up to 1 week.

Avoid repeated freeze/thaw cycles.

Contact

 | www.abclonal.com

Validation Data



Recombinant Rat IgG2A Fc/Igg-2a Protein was determined by SDS-PAGE under reducing conditions with Coomassie Blue.