

RP00709

Leader in Biomolecular Solutions for Life Science



Recombinant Human Mesothelin/MPF/MSLN/CAK1 Protein

Catalog No.: RP00709

Recombinant

Sequence Information

Species	Gene ID	Swiss Prot
Human	10232	Q13421

Tags

C-6×His

Synonyms

MPF; SMRP;MSLN;SMRP

Background

Mesothelin is a cell surface glycoprotein whose expression is limited to mesothelial cells of the serosa (pleura, pericardium, and peritoneum) and epithelial cells of the trachea, tonsils, fallopian tube, and kidneys. Mesothelin plays an important role in cell survival, proliferation, migration, invasion, tumor progression, and resistance to chemotherapy. The overexpression of mesothelin can activate NF- κ B and signal transducer and activator of transcription 3 (Stat3), inhibit apoptotic signaling and TNF- α -induced apoptosis, and accelerate the G1-S transition. Mesothelin is also found overexpressed in various cancers, including malignant mesothelioma, pancreatic or ovarian carcinoma, sarcomas and in some gastrointestinal or pulmonary carcinomas. As a result of its limited expression in normal tissues, mesothelin has been reported as an ideal tumor-associated marker for the development of targeted therapy.

Product Information

Source	Purification
HEK293 cells	> 95% by SDS-PAGE.

Endotoxin

< 1 EU/ μ g of the protein by LAL method.

Formulation

Lyophilized from a 0.2 μ m filtered solution of PBS, pH 7.4. Contact us for customized product form or formulation.

Reconstitution

Reconstitute to a concentration of 0.1-0.5 mg/mL in sterile distilled water.

Basic Information

Description

Recombinant Human Mesothelin/MPF/MSLN/CAK1 Protein is produced by Human Cells expression system. The target protein is expressed with sequence (Leu37-Arg286) of human Mesothelin/MPF/MSLN/CAK1 (Accession #Q13421) fused with a 6×His tag at the C-terminus.

Bio-Activity

Storage

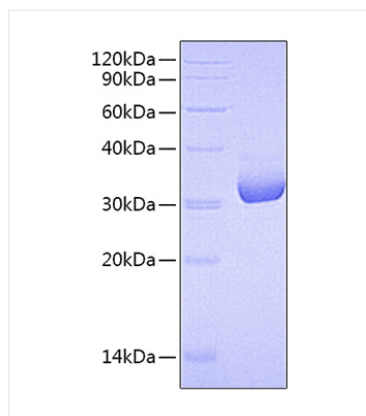
Store the lyophilized protein at -20 °C to -80 °C for long term. After reconstitution, the protein solution is stable at -20 °C for 3 months, at 2-8 °C for up to 1 week. Avoid repeated freeze/thaw cycles.

Contact



www.abclonal.com

Validation Data



Recombinant Human
Mesothelin/MPF/MSLN/CAK1 Protein was
determined by SDS-PAGE under reducing
conditions with Coomassie Blue.