

RP00603

Leader in Biomolecular Solutions for Life Science



## Recombinant Human PD-1/PDCD1/CD279 Protein

Catalog No.: RP00603

Recombinant

### Sequence Information

Species	Gene ID	Swiss Prot
Human	5133	Q15116

#### Tags

C-6×His

#### Synonyms

PDCD1; CD279; PD-1; PD1; SLEB2;  
hPD-1; hPD-I; hSLE1; programmed cell  
death  
1;PD-1;CD279;PD1;SLEB2;hPD-1;hPD-  
I;hSLE1;PD-1/CD279

### Product Information

Source	Purification
HEK293 cells	> 95% by SDS- PAGE.

#### Endotoxin

< 1 EU/μg of the protein by LAL method.

#### Formulation

Lyophilized from a 0.2 μm filtered  
solution of 20mM PB,150mM  
NaCl,pH7.2.Contact us for customized  
product form or formulation.

#### Reconstitution

Reconstitute to a concentration of  
0.1-0.5 mg/mL in sterile distilled water.

### Background

Programmed cell death protein 1(PDCD1) is a single-pass type I membrane protein and contains 1 Ig-like V-type domain. PD-1 is a member of the extended CD28/CTLA-4 family of T cell regulators. PDCD1 inhibits the T-cell proliferation and production of related cytokines including IL-1, IL-4, IL-10 and IFN- γ by suppressing the activation and transduction of PI3K/AKT pathway. In addition, coligation of PDCD1 inhibits BCR-mediated signal by dephosphorylating key signal transducer. PDCD1 has been suggested to be involved in lymphocyte clonal selection and peripheral tolerance, and thus contributes to the prevention of autoimmune diseases. As a cell surface molecule, PDCD1 regulates the adaptive immune response. Engagement of PD-1 by its ligands PD-L1 or PD-L2 transduces a signal that inhibits T-cell proliferation, cytokine production, and cytolytic function.

### Basic Information

#### Description

Recombinant Human PD-1/PDCD1/CD279 Protein is produced by Human cells expression system. The target protein is expressed with sequence (Leu25-Gln167) of human PD-1/PDCD1/CD279 (Accession #Q15116) fused with a 6×His tag at the C-terminus.

#### Bio-Activity

#### Storage

Store the lyophilized protein at -20°C to -80 °C for long term.<br>After reconstitution, the protein solution is stable at -20 °C for 3 months, at 2-8 °C for up to 1 week. Avoid repeated freeze/thaw cycles.

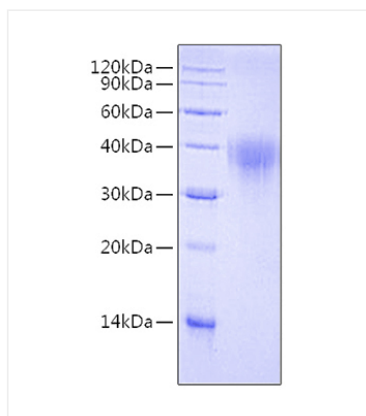
### Contact



[www.abclonal.com](http://www.abclonal.com)

## Validation Data

---



Recombinant Human PD-1/PDCD1/CD279  
Protein was determined by SDS-PAGE under  
reducing conditions with Coomassie Blue.