

# Recombinant Human NKG2-2A/KLRC1/CD159a Protein

Catalog No.: RP00571 **Recombinant**

## Sequence Information

Species	Gene ID	Swiss Prot
Human	3821	P26715

### Tags

N-His

### Synonyms

KLRC1;CD159A;NKG2;NKG2A

## Product Information

Source	Purification
HEK293 cells	> 95% by SDS-PAGE.

### Endotoxin

&lt; 1 EU/μg of the protein by LAL method.

### Formulation

Lyophilized from a 0.2 μm filtered solution of PBS, pH7.4. Contact us for customized product form or formulation.

### Reconstitution

Centrifuge the tube before opening. Reconstitute to a concentration of 0.1-0.5 mg/mL in sterile distilled water. Avoid vortex or vigorously pipetting the protein. For long term storage, it is recommended to add a carrier protein or stabilizer (e.g. 0.1% BSA, 5% HSA, 10% FBS or 5% Trehalose), and aliquot the reconstituted protein solution to minimize freeze-thaw cycles.

## Background

NKG2-A/NKG2-B Type II Integral Membrane Protein contains 1 C-type lectin domain and belongs to the killer cell lectin-like receptor family. The killer cell lectin-like receptor family is a group of transmembrane proteins preferentially expressed in NK cells. Members of this protein family are characterized by the type II membrane orientation and the presence of a C-type lectin domain. NKG2 is expressed only in NK-cells, but not in T-cells or B-cells. It has been shown that NKG2 represents a family of related cDNA clones, designated NKG2A, NKG2B, NKG2C, and NKG2D, which encode type 2 integral membrane proteins (extracellular C-terminus) containing a C-type lectin domain. NKG2 plays a role as a receptor for the recognition of MHC class I HLA-E molecules by NK cells and some cytotoxic T-cells. NKG2A and NKG2B have been given the designation CD159a in the nomenclature of CD antigens.

## Basic Information

### Description

Recombinant Human NKG2-2A/KLRC1/CD159a Protein is produced by Human cells expression system. The target protein is expressed with sequence (Arg100-Leu233) of human NKG2-A/NKG2-B Type II Integral Membrane Protein (Accession #P26715) fused with an 8xHis tag at the N-terminus.

### Bio-Activity

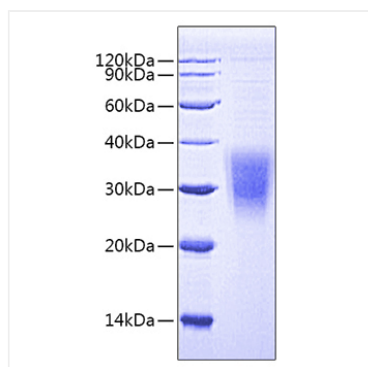
### Storage

Store the lyophilized protein at -20°C to -80 °C for long term. After reconstitution, the protein solution is stable at -20 °C for 3 months, at 2-8 °C for up to 1 week. Avoid repeated freeze/thaw cycles.

## Contact

## Validation Data

---



Recombinant Human  
NKG2-2A/KLRC1/CD159a Protein was  
determined by SDS-PAGE under reducing  
conditions with Coomassie Blue.