

RP00544

Leader in Biomolecular Solutions for Life Science



Recombinant Mouse LIF/Leukemia inhibitory factor Protein

Catalog No.: RP00544

Recombinant

Sequence Information

Species	Gene ID	Swiss Prot
Mouse	16878	P09056

Tags

No tag

Synonyms

LIF;CDF;DIA;HILDA;MLPLI;LIF

Product Information

Source

<I>E. coli</I>

Purification

> 95% by SDS-PAGE.

Endotoxin

< 1 EU/μg of the protein by LAL method.

Formulation

Lyophilized from a 0.2 μm filtered solution of 20mM PB,150mM NaCl,pH7.4.Contact us for customized product form or formulation.

Reconstitution

Reconstitute to a concentration of 0.1-0.5 mg/mL in sterile distilled water.

Background

Mouse Leukemia inhibitory factor [lif] is a secreted protein which belongs to the LIF/OSM family.LIF has been implicated in a many physiological processes including development, hematopoiesis, bone metabolism,and inflammation. It has the capacity to induce terminal differentiation in leukemic cells. Its activities include the induction of hematopoietic differentiation in normal and myeloid leukemia cells, the induction of neuronal cell differentiation, and the stimulation of acute-phase protein synthesis in hepatocytes.

Basic Information

Description

Recombinant Mouse LIF/Leukemia inhibitory factor Protein is produced by <I>E. coli</I> expression system. The target protein is expressed with sequence (Ser24-Phe203) of mouse LIF/Leukemia inhibitory factor (Accession #P09056).

Bio-Activity

Storage

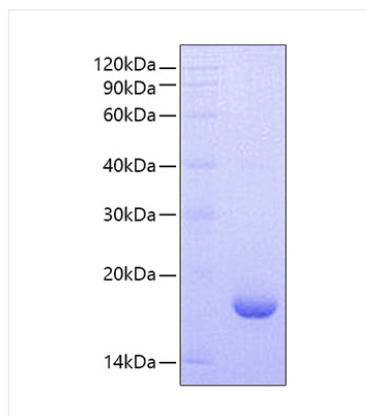
Store the lyophilized protein at -20°C to -80 °C for long term.
After reconstitution, the protein solution is stable at -20 °C for 3 months, at 2-8 °C for up to 1 week. Avoid repeated freeze/thaw cycles.

Contact



www.abclonal.com

Validation Data



Recombinant Mouse LIF/Leukemia inhibitory factor Protein was determined by SDS-PAGE under reducing conditions with Coomassie Blue.