

RP00533

Leader in Biomolecular Solutions for Life Science



# Recombinant Human Serpin F1/PEDF/Pigment epithelium-derived factor Protein

Catalog No.: RP00533

Recombinant

## Sequence Information

Species	Gene ID	Swiss Prot
Human	5176	P36955

### Tags

C-6×His

### Synonyms

EPC-1; OI12; OI6; PEDF;  
PIG35;SERPINF1;OI12;OI6;PEDF;PIG35

## Background

Serpin F1 is a secreted glycoprotein that belongs to the noninhibitory serpin. It has an alpha/beta core serine-protease inhibitor domain, three major beta-sheets, and ten alpha-helices. As protease inhibitors, serpins have an array of functions including regulating blood clotting, the complement pathway, extracellular matrix remodeling, and cell motility. They are also involved in activities that extend beyond their ability to inhibit proteases. For instance, they may also regulate blood pressure, angiogenesis, or act as storage/transport proteins. Serpin F1 is a new promising approach for the treatment of osteosarcoma and has been described as a natural angiogenesis inhibitor with neurotrophic and immune-modulation properties. The human serpin superfamily consists of at least 35 members that target not only serine proteases, but also selected cysteine proteases and non-protease proteins. Levels of the natural ocular anti-angiogenic factor SerturinF1 (PEDF) is associated with proliferative retinopathy.

## Product Information

Source	Purification
HEK293 cells	> 95% by SDS-PAGE.

### Endotoxin

< 1 EU/μg of the protein by LAL method.

### Formulation

Lyophilized from a 0.2 μm filtered solution of 20mM TrisHCl, 150mM NaCl, pH 8.0. Contact us for customized product form or formulation.

### Reconstitution

Reconstitute to a concentration of 0.1-0.5 mg/mL in sterile distilled water.

## Basic Information

### Description

Recombinant Human Serpin F1/PEDF/Pigment epithelium-derived factor Protein is produced by Human cells expression system. The target protein is expressed with sequence (Gln20-Pro418) of human Serpin F1/PEDF/Pigment epithelium-derived factor (Accession #P36955) fused with a 6×His tag at the C-terminus.

### Bio-Activity

### Storage

Store the lyophilized protein at -20°C to -80 °C for long term. After reconstitution, the protein solution is stable at -20 °C for 3 months, at 2-8 °C for up to 1 week. Avoid repeated freeze/thaw cycles.

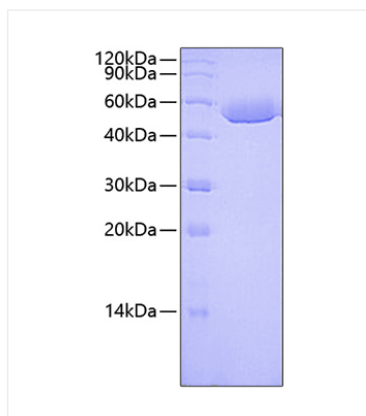
## Contact



[www.abclonal.com](http://www.abclonal.com)

## Validation Data

---



Recombinant Human Serpin  
F1/PEDF/Pigment epithelium-derived factor  
Protein was determined by SDS-PAGE under  
reducing conditions with Coomassie Blue.