

RP00532

Leader in Biomolecular Solutions for Life Science



Recombinant Human Serpin E1 Protein

Catalog No.: RP00532

Recombinant

Sequence Information

Species	Gene ID	Swiss Prot
Human	5054	P05121

Tags

C-His

Synonyms

PAI;PAI-1;PAI1;PLANH1;SERPINE1

Background

Serpins are a group of proteins with similar structures that were first identified as a set of proteins able to inhibit proteases. They are the largest and most diverse family of serine protease inhibitors which are involved in a number of fundamental biological processes such as blood coagulation, complement activation, fibrinolysis, angiogenesis, inflammation and tumor suppression and are expressed in a cell-specific manner. Serpin E1 is a secreted protein which belongs to the Serpin family. Serpin E1 acts as 'bait' for tissue plasminogen activator, urokinase, and protein C. Its rapid interaction with TPA may function as a major control point in the regulation of fibrinolysis. Defects in SERPINE1 are characterized by abnormal bleeding due to Serpin E1 defect in the plasma. High concentrations of Serpin E1 have been associated with thrombophilia which is an autosomal dominant disorder in which affected individuals are prone to develop serious spontaneous thrombosis.

Product Information

Source	Purification
HEK293 cells	> 95% by SDS-PAGE.

Endotoxin

< 1 EU/μg of the protein by LAL method.

Formulation

Lyophilized from a 0.2 μm filtered solution of 20mM HAc-NaAc, 150mM NaCl, pH 4.0. Contact us for customized product form or formulation.

Reconstitution

Centrifuge the tube before opening. Reconstitute to a concentration of 0.1-0.5 mg/mL in sterile distilled water. Avoid vortex or vigorously pipetting the protein. For long term storage, it is recommended to add a carrier protein or stabilizer (e.g. 0.1% BSA, 5% HSA, 10% FBS or 5% Trehalose), and aliquot the reconstituted protein solution to minimize freeze-thaw cycles.

Basic Information

Description

Recombinant Human Serpin E1 Protein is produced by Human cells expression system. The target protein is expressed with sequence (Val24-Pro402) of human Serpin E1 (Accession #P05121) fused with a 6xHis tag at the C-terminus.

Bio-Activity

Storage

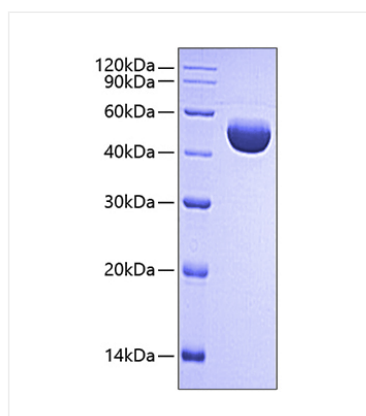
Store the lyophilized protein at -20°C to -80 °C for long term. After reconstitution, the protein solution is stable at -20 °C for 3 months, at 2-8 °C for up to 1 week. Avoid repeated freeze/thaw cycles.

Contact



www.abclonal.com

Validation Data



Recombinant Human Serpin E1 Protein was determined by SDS-PAGE under reducing conditions with Coomassie Blue.