

RP00492

Leader in Biomolecular Solutions for Life Science



# Recombinant Human Leptin Protein

Catalog No.: RP00492

Recombinant

## Sequence Information

| Species | Gene ID | Swiss Prot |
|---------|---------|------------|
| Human   | 3952    | P41159     |

### Tags

No tag

### Synonyms

LEP;LEPD;OB;OBS;leptin

## Background

Leptin is a hormone secreted from white adipocytes and plays important role in the regulation of food intake and energy balance. Leptin functions via signaling pathways involving OB-R in hypothalamus. Animal models have revealed the influence of Leptin in reducing body weight and regulating blood glucose level. When mutations are introduced in obese gene, mice with impaired function of leptin are massively obese and in high risk of diabetes. Leptin deficiency reduces metabolic rate. Leptin deficient mice are less active and with lower body temperature than normal animals. Human Leptin shares approximately 84% sequence identity with the mouse protein. Human Leptin consists of 167 amino acid residue including a 21 amino acid residue signal sequence and 146 amino acid residue mature protein sequence.

## Product Information

| Source         | Purification       |
|----------------|--------------------|
| <I>E. coli</I> | > 95% by SDS-PAGE. |

### Endotoxin

< 1 EU/μg of the protein by LAL method.

### Formulation

Lyophilized from a 0.2 μm filtered solution of 20mM PB, 150mM NaCl, pH 7.4. Contact us for customized product form or formulation.

### Reconstitution

Reconstitute to a concentration of 0.1-0.5 mg/mL in sterile distilled water.

## Basic Information

### Description

Recombinant Human Leptin Protein is produced by <I>E. coli</I> expression system. The target protein is expressed with sequence (Val22-Cys167) of human Leptin (Accession #P41159).

### Bio-Activity

### Storage

Store the lyophilized protein at -20°C to -80 °C for long term. <br>After reconstitution, the protein solution is stable at -20 °C for 3 months, at 2-8 °C for up to 1 week. Avoid repeated freeze/thaw cycles.

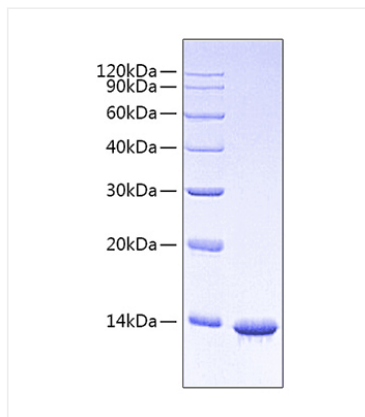
## Contact



[www.abclonal.com](http://www.abclonal.com)

## Validation Data

---



Recombinant Human Leptin Protein was determined by SDS-PAGE under reducing conditions with Coomassie Blue.