

Recombinant Mouse GH/Growth Hormone Protein

Catalog No.: RP00491 **Recombinant**

Sequence Information

Species	Gene ID	Swiss Prot
Mouse	14599	P06880

Tags

No tag

Synonyms

Somatotropin; Growth Hormone; Gh1; Gh

Product Information

Source	Purification
<i>E. coli</i>	> 95% by SDS-PAGE.

Endotoxin

< 1 EU/μg of the protein by LAL method.

Formulation

Lyophilized from a 0.2 μm filtered solution of 50mM TrisHCl, 500mM NaCl, pH 8.0. Contact us for customized product form or formulation.

Reconstitution

Reconstitute to a concentration of 0.1-0.5 mg/mL in sterile distilled water.

Background

Growth hormone (GH), also known as somatotropin, is a member of a family of growth factors that includes prolactin, placental lactogens, proliferins, and somatolactin. It is a peptide hormone that stimulates growth, cell reproduction, and cell regeneration in humans and other animals. Mouse Somatotropin (GH) is a member of the somatotropin/prolactin family of hormones which play an important role in growth control. Its major role in stimulating body growth is to stimulate the liver and other tissues to secrete IGF-1. GH stimulates both the differentiation and proliferation of myoblasts. It also stimulates amino acid uptake and protein synthesis in muscle and other tissues.

Basic Information

Description

Recombinant Mouse GH/Growth Hormone Protein is produced by *E. coli* expression system. The target protein is expressed with sequence (Phe27-Phe216) of mouse GH/Growth Hormone (Accession #P06880) fused with an initial Met at the N-terminus.

Bio-Activity

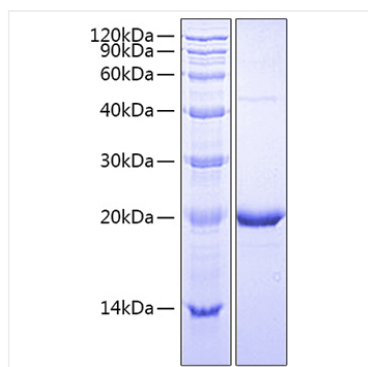
Storage

Store the lyophilized protein at -20°C to -80 °C for long term. After reconstitution, the protein solution is stable at -20 °C for 3 months, at 2-8 °C for up to 1 week. Avoid repeated freeze/thaw cycles.

Contact

 | www.abclonal.com

Validation Data



Recombinant Mouse GH/Growth Hormone Protein was determined by SDS-PAGE under reducing conditions with Coomassie Blue.