

RP00435

Leader in Biomolecular Solutions for Life Science



Recombinant Human Prolactin/PRL Protein

Catalog No.: RP00435

Recombinant

Sequence Information

Species	Gene ID	Swiss Prot
Human	5617	P01236

Tags

C-His

Synonyms

PRL;GHA1;prolactin

Product Information

Source

HEK293 cells

Purification

> 95% by SDS-PAGE.

Endotoxin

< 1 EU/μg of the protein by LAL method.

Formulation

Lyophilized from a 0.2 μm filtered solution of 20 mM PB, 150 mM NaCl, pH7.4. Contact us for customized product form or formulation.

Reconstitution

Reconstitute to a concentration of 0.1-0.5 mg/mL in sterile distilled water.

Background

This protein belongs to the anterior pituitary hormone prolactin. This secreted hormone is a growth regulator for many tissues, including cells of the immune system. It may also play a role in cell survival by suppressing apoptosis, and it is essential for lactation. Alternative splicing results in multiple transcript variants that encode the same protein.

Basic Information

Description

Recombinant Human Prolactin/PRL Protein is produced by Human Cell expression system. The target protein is expressed with sequence (Leu29-Cys227) of human Prolactin/PRL (Accession #P01236) fused with a 6×His tag at the C-terminus.

Bio-Activity

Storage

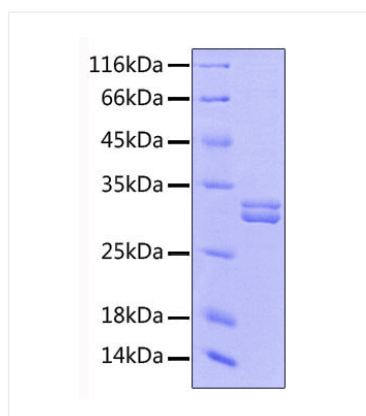
Store the lyophilized protein at -20°C to -80 °C for long term. After reconstitution, the protein solution is stable at -20 °C for 3 months, at 2-8 °C for up to 1 week. Avoid repeated freeze/thaw cycles.

Contact



www.abclonal.com

Validation Data



Recombinant protein Human Prolactin/PRL was determined by SDS-PAGE under reducing conditions with Coomassie Blue, showing bands at 30 kDa and 32 kDa.