

RP00338

Leader in Biomolecular Solutions for Life Science



Recombinant Human M-CSF/CSF1 Protein

Catalog No.: RP00338

Recombinant

Sequence Information

Species	Gene ID	Swiss Prot
Human	1435	P09603

Tags
C-6×His

Synonyms
CSF1;CSF-1;MCSF

Product Information

Source	Purification
HEK293 cells	> 95% by SDS-PAGE.

Endotoxin
< 1 EU/μg of the protein by LAL method.

Formulation
Lyophilized from a 0.2 μm filtered solution of 20 mM PB, 150 mM NaCl, pH 7.2. Contact us for customized product form or formulation.

Reconstitution
Reconstitute to a concentration of 0.1-0.5 mg/mL in sterile distilled water.

Background

This protein is a cytokine that controls the production, differentiation, and function of macrophages. The active form of the protein is found extracellularly as a disulfide-linked homodimer, and is thought to be produced by proteolytic cleavage of membrane-bound precursors. The encoded protein may be involved in development of the placenta. Alternate splicing results in multiple transcript variants.

Basic Information

Description
Recombinant Human M-CSF/CSF1 Protein is produced by Human Cell expression system. The target protein is expressed with sequence (Glu33-Arg255) of human M-CSF/CSF1 (Accession #P09603) fused with a 6×His tag at the C-terminus.

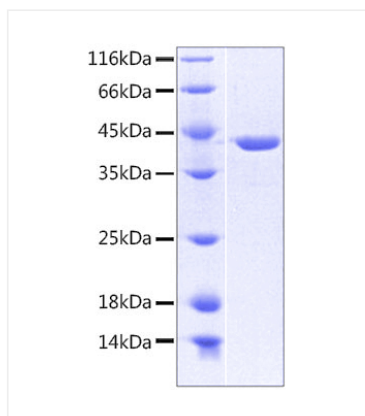
Bio-Activity

Storage
Store the lyophilized protein at -20°C to -80 °C for long term. After reconstitution, the protein solution is stable at -20 °C for 3 months, at 2-8 °C for up to 1 week. Avoid repeated freeze/thaw cycles.

Contact

 | www.abclonal.com

Validation Data



Recombinant protein Human M-CSF/CSF1 was determined by SDS-PAGE under reducing conditions with Coomassie Blue, showing a band at 45 kDa.