

RP00168

Leader in Biomolecular Solutions for Life Science



Recombinant Human TREM-1/CD354 Protein

Catalog No.: RP00168

Recombinant

Sequence Information

Species	Gene ID	Swiss Prot
Human	54210	Q9NP99

Tags

C-hFc&His

Synonyms

TREM1;CD354;TREM-1

Product Information

Source	Purification
HEK293 cells	> 95% by SDS-PAGE.

Endotoxin

< 0.1 EU/μg of the protein by LAL method.

Formulation

Lyophilized from a 0.22 μm filtered solution of PBS, pH 7.4. Contact us for customized product form or formulation.

Reconstitution

Centrifuge the vial before opening. Reconstitute to a concentration of 0.1-0.5 mg/mL in sterile distilled water. Avoid vortex or vigorously pipetting the protein. For long term storage, it is recommended to add a carrier protein or stabilizer (e.g. 0.1% BSA, 5% HSA, 10% FBS or 5% Trehalose), and aliquot the reconstituted protein solution to minimize free-thaw cycles.

Contact



www.abclonal.com

Background

TREM1 (triggering receptor expressed on myeloid cells) is a type I transmembrane protein with a single Ig-like domain, and is selectively expressed on blood neutrophils and a subset of monocytes. As a member of the growing family of receptors related to NK cell receptors, TREM1 activates downstream signaling events with the help of an adapter protein called DAP12. TREM1 amplifies neutrophil and monocyte-mediated inflammatory responses triggered by bacterial and fungal infections by stimulating release of pro-inflammatory chemokines and cytokines, as well as increased surface expression of cell activation markers.

Basic Information

Description

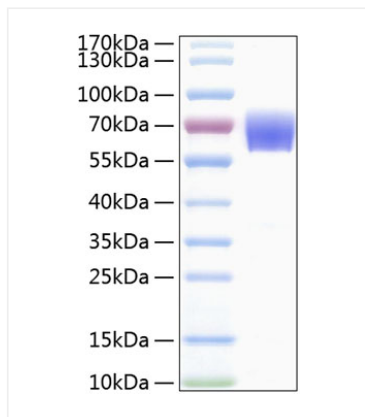
Recombinant Human TREM1 Protein is produced by HEK293 cells expression system. The target protein is expressed with sequence (Ala21-Arg200) of human TREM1 (Accession #NP_061113.1) fused with an Fc, 6xHis tag at the C-terminus.

Bio-Activity

Storage

Store the lyophilized protein at -20°C to -80 °C for long term. After reconstitution, the protein solution is stable at -20 °C for 3 months, at 2-8 °C for up to 1 week. Avoid repeated freeze/thaw cycles.

Validation Data



Recombinant Human TREM-1 Protein was determined by SDS-PAGE with Coomassie Blue, showing a band at 60-70 kDa.