

RP00059

Leader in Biomolecular Solutions for Life Science



Recombinant Human NEDD8 Protein

Catalog No.: RP00059

Recombinant

Sequence Information

Species	Gene ID	Swiss Prot
Human	4738	Q15843

Tags
C-His

Synonyms
NEDD8;NEDD-8

Background

Neural Precursor Cell Expressed Developmentally Downregulated Gene 8 (NEDD8), also known as Related to Ubiquitin 1 (Rub1), is a 6-8 kDa member of the Ubiquitin family of proteins. Human NEDD8 is activated by a distinct NEDD8-activating (E1) enzyme, a heterodimeric complex composed of APPBP1 and UBA3 subunits. Activated NEDD8 is subsequently transferred to the UBE2M/Ubc12 or UBE2F NEDD8-conjugating (E2) enzymes. Through a process termed neddylation, the ROC1/Rbx1 RING Finger E3 ligase transfers NEDD8 to specific substrates. NEDD8 plays a critical regulatory role in cell proliferation and dysregulation of the NEDD8 pathway has been associated with several cancer pathologies.

Basic Information

Description

Recombinant Human NEDD8 Protein is produced by *E. coli* expression system. The target protein is expressed with sequence (Met1-Gly76) of human NEDD8 (Accession #NP_006147.1) fused with a 6×His tag at the C-terminus.

Bio-Activity

Storage

Store the lyophilized protein at -20°C to -80 °C for long term. After reconstitution, the protein solution is stable at -20 °C for 3 months, at 2-8 °C for up to 1 week. Avoid repeated freeze/thaw cycles.

Product Information

Source	Purification
<i>E. coli</i>	> 97% by SDS-PAGE.

Endotoxin

Please contact us for more information.

Formulation

Lyophilized from a 0.22 µm filtered solution of 20mM Tris, 150mM NaCl, pH 8.0. Contact us for customized product form or formulation.

Reconstitution

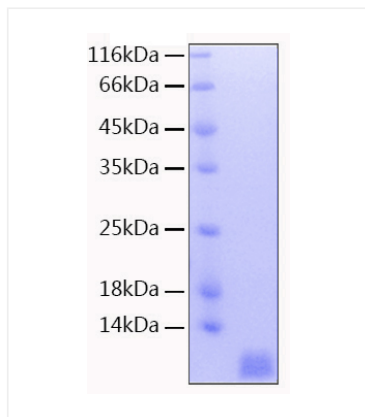
Centrifuge the vial before opening. Reconstitute to a concentration of 0.1-0.5 mg/mL in sterile distilled water. Avoid vortex or vigorously pipetting the protein. For long term storage, it is recommended to add a carrier protein or stabilizer (e.g. 0.1% BSA, 5% HSA, 10% FBS or 5% Trehalose), and aliquot the reconstituted protein solution to minimize freeze-thaw cycles.

Contact



www.abclonal.com

Validation Data



Recombinant Human NEDD8 Protein was determined by SDS-PAGE with Coomassie Blue, showing a band at approximately 9 kDa.