

Phospho-STAT1-Y701 Antibody Kit

Catalog No.	RK04100	Category	Antibody Kit
Applications	WB, IHC, IF, IP	Observed MW	85kDa
Cross-reactivity	Human, Mouse, Rat	Calculated MW	83kDa/87kDa

Immunogen Information

Immunogen	A phospho specific peptide corresponding to residues surrounding Y701 of human STAT1 A synthetic peptide corresponding to a sequence within amino acids 650-750 of human STAT1 (NP_009330.1).
Gene ID	6772
Swiss prot	P42224
Synonyms	CANDF7;IMD31A;IMD31B;IMD31C;ISGF-3;STAT91

Product information

Source	Rabbit
Isotype	IgG
Purification method	Affinity purification
Storage	Store at -20°C. Avoid freeze/ thaw cycles. Buffer: PBS with 0.02% sodium azide, 50% glycerol, pH7.3.

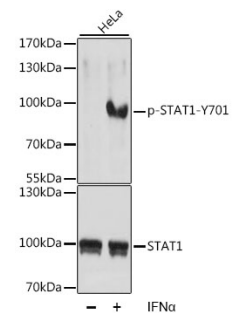
Background

The protein encoded by this gene is a member of the STAT protein family. In response to cytokines and growth factors, STAT family members are phosphorylated by the receptor associated kinases, and then form homo- or heterodimers that translocate to the cell nucleus where they act as transcription activators. This protein can be activated by various ligands including interferon-alpha, interferon-gamma, EGF, PDGF and IL6. This protein mediates the expression of a variety of genes, which is thought to be important for cell viability in response to different cell stimuli and pathogens. Two alternatively spliced transcript variants encoding distinct isoforms have been described.

Recommended Dilutions

WB 1:500 -
1:1000

IHC 1:50 -
1:100



Western blot - Phospho-STAT1-Y701 pAb (AP0135)