

Phospho-PLCG1-S1248 Antibody Kit

Catalog No.	RK04096	Category	Antibody Kit
Applications	WB, IF	Observed MW	149kDa
Cross-reactivity	Human, Mouse, Rat	Calculated MW	148kDa

Immunogen Information

Immunogen A synthetic phosphorylated peptide around S1248 of human PLCG1 (NP_002651.2).
Recombinant fusion protein containing a sequence corresponding to amino acids 1202-1291 of human PLCG1 (NP_002651.2).

Gene ID 5335
Swiss prot P19174
Synonyms NCKAP3;PLC-II;PLC1;PLC148;PLCgamma1

Product information

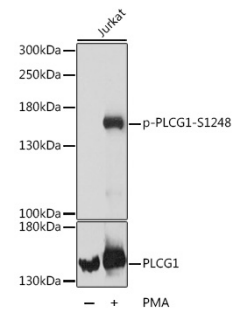
Source Rabbit
Isotype IgG
Purification method Affinity purification
Storage Store at -20°C. Avoid freeze/ thaw cycles.
Buffer: PBS with 0.02% sodium azide,50% glycerol,pH7.3.

Background

The protein encoded by this gene catalyzes the formation of inositol 1,4,5-trisphosphate and diacylglycerol from phosphatidylinositol 4,5-bisphosphate. This reaction uses calcium as a cofactor and plays an important role in the intracellular transduction of receptor-mediated tyrosine kinase activators. For example, when activated by SRC, the encoded protein causes the Ras guanine nucleotide exchange factor RasGRP1 to translocate to the Golgi, where it activates Ras. Also, this protein has been shown to be a major substrate for heparin-binding growth factor 1 (acidic fibroblast growth factor)-activated tyrosine kinase. Two transcript variants encoding different isoforms have been found for this gene.

Recommended Dilutions

WB 1:500 -
1:2000



Western blot - Phospho-PLCG1-S1248 pAb (AP0827)