

## Phospho-GRIA1-S845 Antibody Kit

<b>Catalog No.</b>	RK04093	<b>Category</b>	Antibody Kit
<b>Applications</b>	WB, IF	<b>Observed MW</b>	90kDa
<b>Cross-reactivity</b>	Human, Mouse, Rat	<b>Calculated MW</b>	92kDa/93kDa/101kDa/102kDa

### Immunogen Information

<b>Immunogen</b>	A phospho specific peptide corresponding to residues surrounding 5845 of human GRIA1 Recombinant fusion protein containing a sequence corresponding to amino acids 19-300 of human GRIA1 (NP_000818.2).
<b>Gene ID</b>	2890
<b>Swiss prot</b>	P42261
<b>Synonyms</b>	GluA1;GLUH1;GLUR1;GLUR4;HBGR1

### Product information

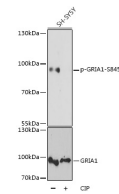
<b>Source</b>	Rabbit
<b>Isotype</b>	IgG
<b>Purification method</b>	Affinity purification
<b>Storage</b>	Store at -20°C. Avoid freeze/ thaw cycles. Buffer: PBS with 0.02% sodium azide,50% glycerol,pH7.3.

### Background

Glutamate receptors are the predominant excitatory neurotransmitter receptors in the mammalian brain and are activated in a variety of normal neurophysiologic processes. These receptors are heteromeric protein complexes with multiple subunits, each possessing transmembrane regions, and all arranged to form a ligand-gated ion channel. The classification of glutamate receptors is based on their activation by different pharmacologic agonists. This gene belongs to a family of alpha-amino-3-hydroxy-5-methyl-4-isoxazole propionate (AMPA) receptors. Alternatively spliced transcript variants encoding different isoforms have been found for this gene.

### Recommended Dilutions

WB 1:500 - 1:2000



Western blot - Phospho-GRIA1-S845 pAb (AP0825)