

Phospho-CREB1-S133 Antibody Kit

Catalog No.	RK04087	Category	Antibody Kit
Applications	WB, IHC, IF	Observed MW	43kDa
Cross-reactivity	Human, Mouse, Rat	Calculated MW	25kDa/35kDa/36kDa

Immunogen Information

Immunogen A phospho specific peptide corresponding to residues surrounding Ser133 of human CREB
Recombinant fusion protein containing a sequence corresponding to amino acids 1-341 of human CREB1 (NP_604391.1).

Gene ID 1385
Swiss prot P16220
Synonyms CREB;CREB-1

Product information

Source Rabbit
Isotype IgG
Purification method Affinity purification
Storage Store at -20°C. Avoid freeze/ thaw cycles.
Buffer: PBS with 0.02% sodium azide, 50% glycerol, pH7.3.

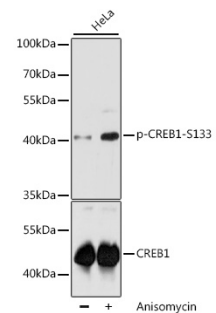
Background

This gene encodes a transcription factor that is a member of the leucine zipper family of DNA binding proteins. This protein binds as a homodimer to the cAMP-responsive element, an octameric palindrome. The protein is phosphorylated by several protein kinases, and induces transcription of genes in response to hormonal stimulation of the cAMP pathway. Alternate splicing of this gene results in several transcript variants encoding different isoforms.

Recommended Dilutions

WB 1:200 -
1:2000

IF 1:50 -
1:100



Western blot - Phospho-CREB1-S133 pAb (AP0019)