

## Phospho-LMNA-S22 Antibody Kit

|                         |                   |                      |              |
|-------------------------|-------------------|----------------------|--------------|
| <b>Catalog No.</b>      | RK04084           | <b>Category</b>      | Antibody Kit |
| <b>Applications</b>     | WB, IHC, IF       | <b>Observed MW</b>   | 69kDa, 78kDa |
| <b>Cross-reactivity</b> | Human, Mouse, Rat | <b>Calculated MW</b> | 62-74kDa     |

### Immunogen Information

**Immunogen** A synthetic phosphorylated peptide around S22 of human LMNA (NP\_005563.1).  
Recombinant fusion protein containing a sequence corresponding to amino acids 403-572 of human Lamin C (NP\_005563.1).

**Gene ID** 4000

**Swiss prot** P02545

**Synonyms** CDCD1;CDDC;CMD1A;CMT2B1;EMD2;FPL;FPLD;FPLD2;HG PS;IDC;LDP1;LFP;LGMD1B;LMN1;LMNC;LMNL1;MADA;PRO1;CDCD1;CDDC;CMD1A;CMT2B1;EMD2;FPL;FPLD;FPLD2;HGPS;IDC;LDP1;LFP;LGMD1B;LMN1;LMNC;LMNL1;PRO1

### Product information

**Source** Rabbit

**Isotype** IgG

**Purification method** Affinity purification

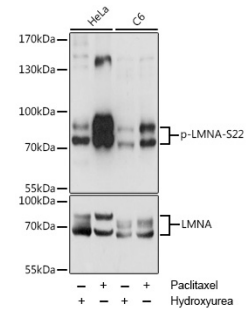
**Storage** Store at -20°C. Avoid freeze/ thaw cycles.  
Buffer: PBS with 0.02% sodium azide, 50% glycerol, pH7.3.

### Background

The nuclear lamina consists of a two-dimensional matrix of proteins located next to the inner nuclear membrane. The lamin family of proteins make up the matrix and are highly conserved in evolution. During mitosis, the lamina matrix is reversibly disassembled as the lamin proteins are phosphorylated. Lamin proteins are thought to be involved in nuclear stability, chromatin structure and gene expression. Vertebrate lamins consist of two types, A and B. Alternative splicing results in multiple transcript variants. Mutations in this gene lead to several diseases: Emery-Dreifuss muscular dystrophy, familial partial lipodystrophy, limb girdle muscular dystrophy, dilated cardiomyopathy, Charcot-Marie-Tooth disease, and Hutchinson-Gilford progeria syndrome.

### Recommended Dilutions

WB 1:500 -  
1:2000



Western blot - Phospho-LMNA-S22 pAb (AP0777)