

Phospho-RPS6-S240/244 Antibody Kit

Catalog No.	RK04081	Category	Antibody Kit
Applications	WB, IP	Observed MW	36kDa
Cross-reactivity	Human, Mouse, Rat	Calculated MW	28kDa

Immunogen Information

Immunogen A phospho specific peptide corresponding to residues surrounding S240/244 of human RPS6KB1
A synthetic peptide corresponding to a sequence within amino acids 1-100 of human RPS6 (NP_001001.2).

Gene ID 6194
Swiss prot P62753
Synonyms S6

Product information

Source Rabbit
Isotype IgG
Purification method Affinity purification
Storage Store at -20°C. Avoid freeze/ thaw cycles.
Buffer: PBS with 0.02% sodium azide, 50% glycerol, pH7.3.

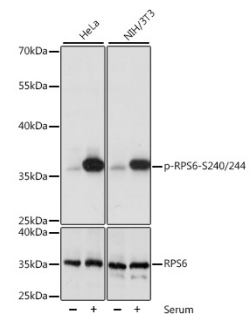
Background

Ribosomes, the organelles that catalyze protein synthesis, consist of a small 40S subunit and a large 60S subunit. Together these subunits are composed of 4 RNA species and approximately 80 structurally distinct proteins. This gene encodes a cytoplasmic ribosomal protein that is a component of the 40S subunit. The protein belongs to the S6E family of ribosomal proteins. It is the major substrate of protein kinases in the ribosome, with subsets of five C-terminal serine residues phosphorylated by different protein kinases. Phosphorylation is induced by a wide range of stimuli, including growth factors, tumor-promoting agents, and mitogens. Dephosphorylation occurs at growth arrest. The protein may contribute to the control of cell growth and proliferation through the selective translation of particular classes of mRNA. As is typical for genes encoding ribosomal proteins, there are multiple processed pseudogenes of this gene dispersed through the genome.

Recommended Dilutions

WB 1:500 -
1:2000

IP 1:50 -
1:100



Western blot - Phospho-RPS6-S240/244 pAb (AP0537)