

Phospho-EGFR-Y1045 Antibody Kit

Catalog No.	RK04080	Category	Antibody Kit
Applications	WB, IHC, IF	Observed MW	180kDa
Cross-reactivity	Human, Mouse, Rat	Calculated MW	44kDa/69kDa/77kDa/134kDa

Immunogen Information

Immunogen A phospho specific peptide corresponding to residues surrounding Y1045 of human EGFR
Recombinant fusion protein containing a sequence corresponding to amino acids 1021-1210 of human EGFR (NP_005219.2).

Gene ID 1956
Swiss prot P00533
Synonyms ERBB;ERBB1;HER1;mENA;NISBD2;PIG61

Product information

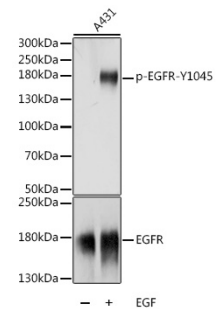
Source Rabbit
Isotype IgG
Purification method Affinity purification
Storage Store at -20°C. Avoid freeze/ thaw cycles.
Buffer: PBS with 0.02% sodium azide,50% glycerol,pH7.3.

Background

The protein encoded by this gene is a transmembrane glycoprotein that is a member of the protein kinase superfamily. This protein is a receptor for members of the epidermal growth factor family. EGFR is a cell surface protein that binds to epidermal growth factor. Binding of the protein to a ligand induces receptor dimerization and tyrosine autophosphorylation and leads to cell proliferation. Mutations in this gene are associated with lung cancer.

Recommended Dilutions

WB 1:500 -
1:2000



Western blot - Phospho-EGFR-Y1045 pAb (AP0819)