

Phospho-MAP2K1-S298 Antibody Kit

Catalog No.	RK04078	Category	Antibody Kit
Applications	WB, IP	Observed MW	43kDa
Cross-reactivity	Human, Mouse, Rat	Calculated MW	40kDa/43kDa

Immunogen Information

Immunogen	A phospho specific peptide corresponding to residues surrounding S298 of human MAP2K1 A synthetic peptide corresponding to a sequence within amino acids 1-100 of human MAP2K1 (NP_002746.1).
Gene ID	5604
Swiss prot	Q02750
Synonyms	CFC3;MAPKK1;MEK1;MKK1;PRKMK1

Product information

Source	Rabbit
Isotype	IgG
Purification method	Affinity purification
Storage	Store at -20°C. Avoid freeze/ thaw cycles. Buffer: PBS with 0.02% sodium azide, 50% glycerol, pH7.3.

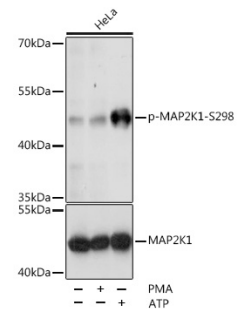
Background

The protein encoded by this gene is a member of the dual specificity protein kinase family, which acts as a mitogen-activated protein (MAP) kinase kinase. MAP kinases, also known as extracellular signal-regulated kinases (ERKs), act as an integration point for multiple biochemical signals. This protein kinase lies upstream of MAP kinases and stimulates the enzymatic activity of MAP kinases upon wide variety of extra- and intracellular signals. As an essential component of MAP kinase signal transduction pathway, this kinase is involved in many cellular processes such as proliferation, differentiation, transcription regulation and development.

Recommended Dilutions

WB 1:500 -
1:2000

IP 1:50 -
1:100



Western blot - Phospho-MAP2K1-S298 pAb (AP0063)