

Mouse Yes Associated Protein 1 ELISA Kit (YAP1)

Catalog Number: RK03292

This ELISA kit used for quantitative determination of YAP1 in mouse tissue homogenates, cell lysates and other biological fluids. For research use only, and it's highly recommended to read thoroughly of this manual before using the product.

Manufactured by

Global Headquarters

86 Cummings Park

Woburn, MA 01801

Tel: +8887545670

China Branch

388# Gaoxin Road (No.2)

East Lake Development Zone

Wuhan P. R. China

Tel: 400-999-6126

E-mail: market@abclonal.com

[http: www.abclonal.com.cn](http://www.abclonal.com.cn)

Introduction

The kit is a sandwich enzyme immunoassay for in vitro quantitative measurement of YAP1 in mouse tissue homogenates, cell lysates and other biological fluids.

Principle of The Assay

This assay employs the quantitative sandwich enzyme immunoassay technique. An antibody specific for YAP1 has been pre-coated onto a microplate. Standards and samples are pipetted into the wells and any YAP1 present is bound by the immobilized antibody. Following incubation unbound samples are removed during a wash step, and then a detection antibody specific for YAP1 is added to the wells and binds to the combination of capture antibody-YAP1 in sample. Following a wash to remove any unbound combination, and enzyme conjugate is added to the wells. Following incubation and wash steps, a substrate is added. A colored product TMB is formed in proportion to the amount of YAP1 present in the sample. The reaction is terminated by addition of acid and absorbance is measured. A standard curve is prepared from seven YAP1 standard dilutions and YAP1 sample concentration determined.

Materials Provided

Part	Size (96T)	Cat NO.	STORAGE OF OPENED/ RECONSTITUTED MATERIAL
Antibody Coated Plate	8×12	RM14607	Return unused wells to the foil pouch containing the desiccant pack and store at ≤ -20°C. Reseal along entire edge of zip-seal.
Standard Lyophilized	2	RM14608	Aliquot and store at ≤ -20 °C in a manual defrost freezer. * Avoid repeated freeze-thaw cycles.
Concentrated Biotin Conjugate Antibody (100×)	1 ×120ul	RM14609	May be stored for up to 6 month at 2-8 °C.*
Streptavidin-HRP Concentrated (100×)	1 ×120ul	RM14610	
Standard/Sample Diluent (R1)	1 ×20mL	RM00023	May be stored for up to 6 month at 2-8 °C.*
Biotin-Conjugate Antibody Diluent (R2)	1 ×12mL	RM00024	
Streptavidin-HRP Diluent(R3)	1 ×12mL	RM00025	
Wash Buffer(30x)	1 × 20mL	RM00026	
TMB Substrate	1 ×9 mL	RM00027	
Stop Solution	1 ×6 mL	RM00028	
Plate Sealers	4 strips		
Specification	1		

Sample Collection and Storage

1. Cell Lysates

Cells need to be lysed before assaying according to the following directions. Adherent cells should be washed by cold PBS gently, and then detached with trypsin, and collected by centrifugation at $1,000 \times g$ for 5 minutes (suspension cells can be collected by centrifugation directly). Wash cells three times in cold PBS. Resuspend cells in fresh lysis buffer with concentration of 10^7 cells/mL. If it is necessary, the cells could be subjected to ultrasonication till the solution is clarified. Centrifuge at $1,500 \times g$ for 10 minutes at $2-8^{\circ}\text{C}$ to remove cellular debris. Assay immediately or aliquot and store at $\leq -20^{\circ}\text{C}$.

2. Tissue homogenates

The preparation of tissue homogenates will vary depending upon tissue type. Tissues were rinsed in ice-cold PBS to remove excess blood thoroughly and weighed before homogenization. Minced the tissues to small pieces and homogenized them in fresh lysis buffer (different lysis buffer needs to be chosen based on subcellular location of the target protein) (e.g. 1mL lysis buffer is added in 200mg tissue sample) with a glass homogenizer on ice (Micro Tissue Grinders works, too). The resulting suspension was sonicated with an ultrasonic cell disrupter till the solution is clarified. Then, the homogenates were centrifuged for 5 minutes at $10,000 \times g$. Collect the supernates and assay immediately or aliquot and store at $\leq -20^{\circ}\text{C}$.

3. Other biological fluids

Centrifuge samples for 20 minutes at $1,000 \times g$. Collect the supernates and assay immediately or store samples in aliquot at -20°C or -80°C for later use. Avoid repeated freeze/thaw cycles.

4. Dilution:

Dilute samples at the appropriate multiple (recommend to do pre-test to determine the dilution factor).

Precautions

- 1. FOR RESEARCH USE ONLY. NOT FOR USE IN DIAGNOSTIC PROCEDURES.**
- Any variation in diluent, operator, pipetting technique, washing technique, incubation time or temperature, and kit age can cause variation in binding.
- Variations in sample collection, processing, and storage may cause sample value differences.
- Reagents may be harmful, if ingested, rinse it with an excess amount of tap water.
- Stop Solution contains strong acid. Wear eye, hand, and face protection.
- Apart from the standard of kits, other components should not be refrigerated.
- Please perform simple centrifugation to collect the liquid before use.
- Do not mix or substitute reagents with those from other lots or other sources.
- Adequate mixing is very important for good result. Use a mini-vortexer at the lowest frequency.
- Mix the sample and all components in the kits adequately, and use clean plastic container to prepare all of the diluent.
- Both the sample and standard should be assayed in duplicate, and the sequence of the reagents should be added consistently.
- Reuse of dissolved standard is not recommended.
- The kit should not be used beyond the expiration date on the kit label.
- The kit should be away from light when it is stored or incubated.

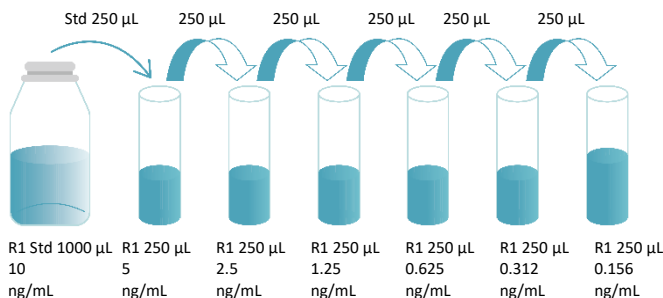
15. To reduce the likelihood of blood-borne transmission of infectious agents, handle all serum, plasma and other biological fluids in accordance with NCCLS regulations.
16. To avoid cross contamination, please use disposable pipette tips.
17. Please prepare all the kit components according to the Specification. If the kits will be used several times, please seal the rest strips and preserve with desiccants. Do use up within 2 months.
18. The 48T kit is also suitable for the specification.

Experiment Materials

1. Microplate reader (measuring absorbance at 450 nm, with the correction wavelength set at 570 nm or 630 nm).
2. Pipettes and pipette tips: 0.5-10, 2-20, 20-200, 200-1000 μ L.
3. Microplate washer, Squirt bottle.
4. Micro-oscillator.
5. Deionized or double distilled water, graduated cylinder.
6. Polypropylene Test tubes for dilution.
7. Incubator.

Reagent Preparation

1. **Bring all reagents to room temperature before use. If crystals have formed in the concentrate, Bring the reagent to room temperature and mix gently until the crystals have completely dissolved.**
2. **Standard:** Add Standard/Sample Diluent(R1) 1.0mL into freeze-dried standard, sit for a minimum of 15 minutes with gentle agitation prior to making dilutions (10ng/mL), Prepare EP tubes containing Standard/Sample Diluent(R1), and produce a dilution series according to the picture shown below (recommended concentration for standard curve: 10ng/mL, 5ng/mL, 2.5ng/mL, 1.25ng/mL, 0.625ng/mL, 0.312ng/mL, 0.156ng/mL). Redissolved standard solution (10ng/mL), aliquot and store at -20°C— -70°C.



3. **Concentrated Biotin Conjugate Antibody (100x)** : Dilute 1:100 with the Biotin-Conjugate Antibody Diluent (R2) before use, and the diluted solution should be used within 30 min.

Dilution Method

Strip	Concentrated Biotin-Conjugate antibody (100x)	Biotin-Conjugate Antibody Diluent (R2)
2	20ul	1980ul
4	40ul	3960ul
6	60ul	5940ul
8	80ul	7920ul
10	100ul	9900ul
12	120ul	11880ul

4. **Streptavidin-HRP Concentrated (100x)**: Dilute 1:100 with the Streptavidin-HRP Diluent(R3) before use, and the diluted solution should be used within 30 min.

Dilution Method

Strip	Concentrated Streptavidin-HRP (100x)	Streptavidin-HRP Diluent(R3)
2	20ul	1980ul
4	40ul	3960ul
6	60ul	5940ul
8	80ul	7920ul
10	100ul	9900ul
12	120ul	11880ul

5. **Wash buffer:** Dilute 1:30 with double distilled or deionized water before use.

Wash Method

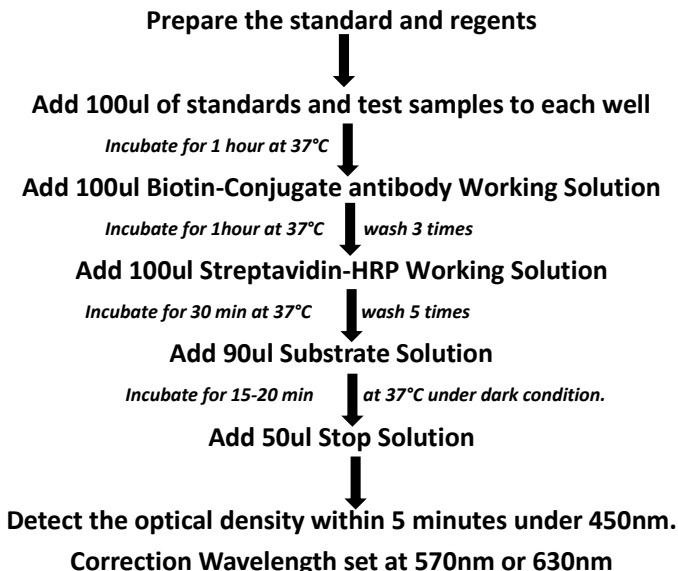
Aspirate each well and wash, repeating the process two times for a total of three washes. Wash by filling each well with **Wash Buffer**(300ul) using a squirt bottle, manifold dispenser, or autowasher. Complete removal of liquid at each step is essential to good performance. After the last wash, remove any remaining **Wash Buffer** by aspirating or decanting. Invert the plate and blot it against clean paper towels.

Assay Procedure

1. Remove excess microplate strips from the plate frame, return them to the foil pouch containing the desiccant pack, and reseal.
2. Add 100 μ L Standard/sample Diluent (R1) in blank well.

3. Add 100 μ L different concentration of standard and sample in other wells, cover with the adhesive strip provided. Incubate for 1 hour at 37°C.
4. Remove the liquid of each well, don't wash.
5. Prepare the Concentrated Biotin Conjugate Antibody (100X) Working Solution 15 minutes early before use.
6. Add Biotin-Conjugate Antibody Diluent(R2) in blank well and Biotin-Conjugate antibody Working Solution in other wells (100 μ L/well), cover with new adhesive strip provided. Incubate for 1 hour at 37°C.
7. Prepare the Streptavidin-HRP Concentrated (100X) Working Solution 15minutes early before use.
8. Add wash buffer 350 μ L/well, aspirate each well after holding 60-120 seconds, repeating the process two times for a total of three washes.
9. Add Streptavidin-HRP Diluent(R3) in blank well and add Streptavidin-HRP Working Solution in other wells (100 μ L/well), cover with new adhesive strip provided. Incubate for 30 minutes at 37°C.
10. Warm-up the Microplate reader.
11. Add wash buffer 350 μ L/well, aspirate each well after holding 60-120 seconds, repeating the process four times for a total of five washes.
12. Add TMB Substrate (90 μ L/well). Incubate for 15-20 minutes at 37°C . Protect from light.
13. Add Stop Solution (50 μ L/well), determine the optical density of each well within 5 minutes, using a Microplate reader set to 450 nm. If wavelength correction is available, set to 570 nm or 630 nm. If wavelength correction is not available, subtract readings at 570 nm or 630 nm from the readings at 450 nm. This subtraction will correct for optical imperfections in the plate. Readings made directly at 450 nm without correction may be higher and less accurate.

Assay Procedure Summary



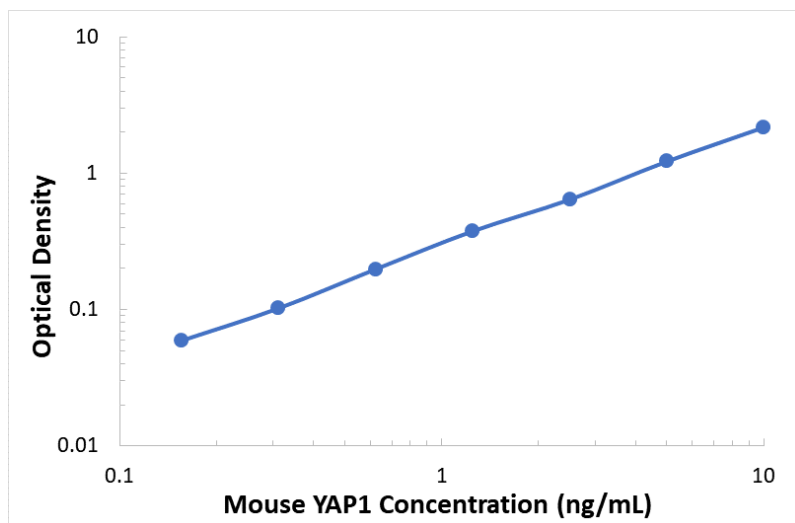
Calculation of Results

1. Average the duplicate readings for each standard, control and sample, and subtract the average zero standard optical density (O.D.).
2. Create a standard curve by reducing the data using computer software capable of generating a log/log curve-fit. As an alternative, construct a standard curve by plotting the mean absorbance for each standard on the y-axis against the concentration on the x-axis and draw a best fit curve through

the points on a log/log graph. The data may be linearized by plotting the log of the YAP1 concentrations versus the log of the O.D. on a linear scale, and the best fit line can be determined by regression analysis.

3. If samples have been diluted, the concentration read from the standard curve must be multiplied by the dilution factor.

Typical Data



The standard curves are provided for demonstration only. A standard curve should be generated for each set of YAP1 assayed.

Sensitivity

The minimum detectable dose (MDD) of YAP1 is typically less than 0.058 ng/mL. The MDD was determined by adding two standard deviations to the mean optical density value of twenty zero standard replicates and calculating the corresponding concentration.

Specificity

This assay has high sensitivity and excellent specificity for detection of YAP1. No significant cross-reactivity or interference between YAP1 and analogues was observed.

Note:

Limited by current skills and knowledge, it is impossible for us to complete the cross- reactivity detection between YAP1 and all the analogues, therefore, cross reaction may still exist.

Precision

Intra-plate Precision

3 samples with low, middle and high level YAP1 were tested 20 times on one plate, respectively.

Intra-Assay: CV<10%

Inter-plate Precision

3 samples with low, middle and high level YAP1 were tested on 3 different plates, 8 replicates in each plate.

Inter-Assay: CV<12%