

AP1446

Leader in Biomolecular Solutions for Life Science



Phospho-AKT2-S474(Akt2 Specific) Rabbit mAb

Catalog No.: AP1446

Recombinant

Basic Information

Observed MW

90kDa

Calculated MW

56kDa

Category

SMab Recombinant Monoclonal Antibody

Applications

WB,IF/ICC,ELISA

Cross-Reactivity

Human

CloneNo number

ARC62460

Background

This gene is a putative oncogene encoding a protein belonging to a subfamily of serine/threonine kinases containing SH2-like (Src homology 2-like) domains, which is involved in signaling pathways. The gene serves as an oncogene in the tumorigenesis of cancer cells. For example, its overexpression contributes to the malignant phenotype of a subset of human ductal pancreatic cancers. The encoded protein is a general protein kinase capable of phosphorylating several known proteins, and has also been implicated in insulin signaling.

Recommended Dilutions

WB	1:500 - 1:1000
IF/ICC	1:50 - 1:200

Immunogen Information

Gene ID

208

Swiss Prot

P31751

Immunogen

A synthetic phosphorylated peptide around S474 of human AKT2(NP_001617.1) specific.

Synonyms

PKBB; PRKBB; HIHGHH; PKBBETA; RAC-BETA; Phospho-AKT2-S474(Akt2 Specific)

Contact



www.abclonal.com

Product Information

Source

Rabbit

Isotype

IgG

Purification

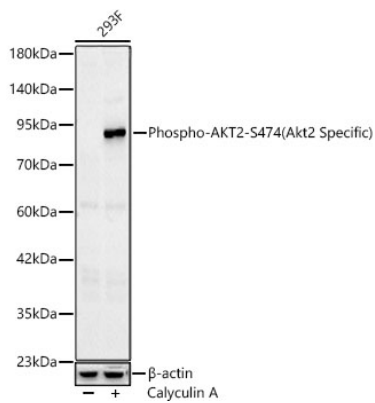
Affinity purification

Storage

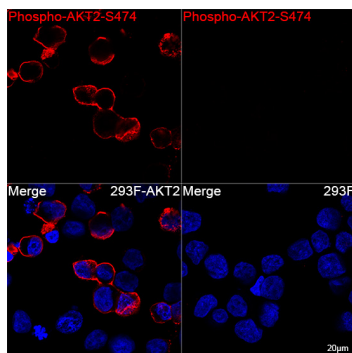
Store at -20°C. Avoid freeze / thaw cycles.

Buffer: PBS with 0.05% proclin300, 0.05% BSA, 50% glycerol, pH7.3.

Validation Data



Western blot analysis of lysates from 293T cells using Phospho-AKT2-S474(Akt2 Specific) Rabbit mAb (AP1446) at 1:1000 dilution. 293T cells were treated by Calyculin A (100 nM) at 37°C for 30 minutes after serum-starvation overnight.
 Secondary antibody: HRP Goat Anti-Rabbit IgG (H+L) (AS014) at 1:10000 dilution.
 Lysates/proteins: 25ug per lane.
 Blocking buffer: 3% nonfat dry milk in TBST.
 Detection: ECL Basic Kit (RM00020).
 Exposure time: 30s.



Confocal imaging of 293F cells transfected with AKT2 using Phospho-AKT2-S474(Akt2 Specific) Rabbit mAb (AP1446, dilution 1:200) followed by a further incubation with Cy3 Goat Anti-Rabbit IgG (H+L) (AS007, dilution 1:500) (Red). DAPI was used for nuclear staining (Blue). Objective: 100x.