

AP1432

Leader in Biomolecular Solutions for Life Science



## Phospho-HSL-S660 Rabbit mAb

Catalog No.: AP1432

Recombinant

### Basic Information

#### Observed MW

84kDa

#### Calculated MW

117kDa

#### Category

SMab Recombinant Monoclonal Antibody

#### Applications

WB, ELISA

#### Cross-Reactivity

Mouse

#### CloneNo number

ARC61254

### Background

The protein encoded by this gene has a long and a short form, generated by use of alternative translational start codons. The long form is expressed in steroidogenic tissues such as testis, where it converts cholesteryl esters to free cholesterol for steroid hormone production. The short form is expressed in adipose tissue, among others, where it hydrolyzes stored triglycerides to free fatty acids.

### Recommended Dilutions

WB 1:500 - 1:1000

### Immunogen Information

#### Gene ID

3991

#### Swiss Prot

Q05469

#### Immunogen

A synthesized peptide derived from human HSL (Phospho-Ser660)

#### Synonyms

HSL; LHS; REH; AOMS4; FPLD6; Phospho-HSL-S660

### Contact



[www.abclonal.com](http://www.abclonal.com)

### Product Information

#### Source

Rabbit

#### Isotype

IgG

#### Purification

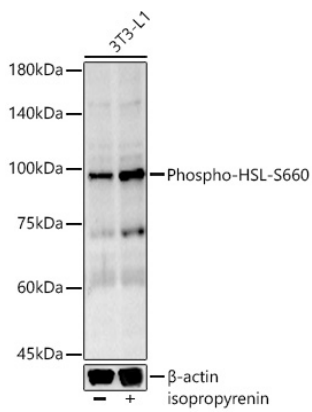
Affinity purification

#### Storage

Store at -20°C. Avoid freeze / thaw cycles.

Buffer: PBS with 0.05% proclin300, 0.05% BSA, 50% glycerol, pH7.3.

## Validation Data



Western blot analysis of 3T3-L1 cells, using Phospho-HSL-S660 Rabbit mAb (AP1432) at 1:1000 dilution. 3T3-L1 cells that were not differentiated or differentiated into adipocytes treated with 0.06mol/L alcohol and treated with isoproterenol (10  $\mu$ M, 20 min).  
Secondary antibody: HRP Goat Anti-Rabbit IgG (H+L) (AS014) at 1:10000 dilution.  
Lysates/proteins: 25 $\mu$ g per lane.  
Blocking buffer: 3% nonfat dry milk in TBST.  
Detection: ECL Basic Kit (RM00020).  
Exposure time: 180s.