

AP1257

Leader in Biomolecular Solutions for Life Science



## Phospho-RIP3-S227 Rabbit pAb

Catalog No.: AP1257

### Basic Information

#### Observed MW

Refer to figures

#### Calculated MW

57kDa

#### Category

Mouse Monoclonal Antibody

#### Applications

IHC-P, ELISA

#### Cross-Reactivity

Human, Mouse, Rat

### Background

The product of this gene is a member of the receptor-interacting protein (RIP) family of serine/threonine protein kinases, and contains a C-terminal domain unique from other RIP family members. The encoded protein is predominantly localized to the cytoplasm, and can undergo nucleocytoplasmic shuttling dependent on novel nuclear localization and export signals. It is a component of the tumor necrosis factor (TNF) receptor-I signaling complex, and can induce apoptosis and weakly activate the NF-kappaB transcription factor.

### Recommended Dilutions

IHC-P 1:50 - 1:200

### Immunogen Information

**Gene ID**  
11035

**Swiss Prot**  
Q9Y572

#### Immunogen

A synthetic phosphorylated peptide around S227 of human RIP3 (NP\_006862.2).

#### Synonyms

RIP3; Phospho-RIP3-S227

### Contact



[www.abclonal.com](http://www.abclonal.com)

### Product Information

**Source**  
Rabbit

**Isotype**  
IgG

**Purification**  
Affinity purification

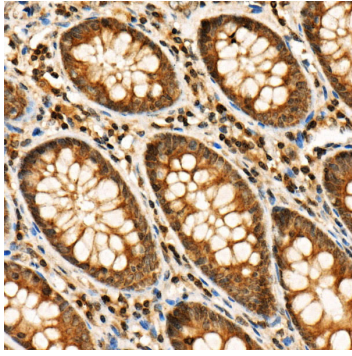
#### Storage

Store at -20°C. Avoid freeze / thaw cycles.

Buffer: PBS with 0.05% proclin300, 50% glycerol, pH7.3.

## Validation Data

---



Immunohistochemistry analysis of paraffin-embedded human colon using Phospho-RIP3-S227 Rabbit pAb (AP1257) at dilution of 1:20 (40x lens). Perform high pressure antigen retrieval with 10 mM citrate buffer pH 6.0 before commencing with IHC staining protocol.