

AP1213

Leader in Biomolecular Solutions for Life Science



## Phospho-EGFR-Y1173 Rabbit pAb

Catalog No.: AP1213

### Basic Information

**Observed MW**

175kDa

**Calculated MW**

134kDa

**Category**

Polyclonal Antibody

**Applications**

WB, ELISA

**Cross-Reactivity**

Human

### Background

The protein encoded by this gene is a transmembrane glycoprotein that is a member of the protein kinase superfamily. This protein is a receptor for members of the epidermal growth factor family. EGFR is a cell surface protein that binds to epidermal growth factor, thus inducing receptor dimerization and tyrosine autophosphorylation leading to cell proliferation. Mutations in this gene are associated with lung cancer. EGFR is a component of the cytokine storm which contributes to a severe form of Coronavirus Disease 2019 (COVID-19) resulting from infection with severe acute respiratory syndrome coronavirus-2 (SARS-CoV-2).

### Recommended Dilutions

WB 1:100 - 1:500

### Immunogen Information

**Gene ID**

1956

**Swiss Prot**

P00533

**Immunogen**

A phospho specific peptide corresponding to residues surrounding Y1173 of human EGFR

**Synonyms**

ERBB; ERRP; HER1; mENA; ERBB1; PIG61; NISBD2; Phospho-EGFR-Y1173

### Contact



[www.abclonal.com](http://www.abclonal.com)

### Product Information

**Source**

Rabbit

**Isotype**

IgG

**Purification**

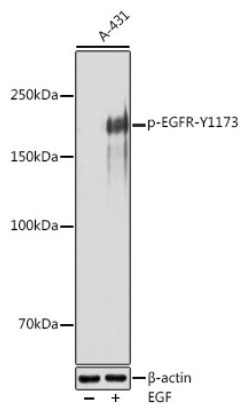
Affinity purification

**Storage**

Store at -20°C. Avoid freeze / thaw cycles.

Buffer: PBS with 0.01% thimerosal, 50% glycerol, pH7.3.

## Validation Data



Western blot analysis of lysates from A-431 cells, using Phospho-EGFR-Y1173 Rabbit pAb (AP1213) at 1:500 dilution. A-431 cells were treated by EGF (25 µg/mL) at 37°C for 30 minutes after serum-starvation overnight.

Secondary antibody: HRP Goat Anti-Rabbit IgG (H+L) (AS014) at 1:10000 dilution.

Lysates/proteins: 25µg per lane.

Blocking buffer: 3% nonfat dry milk in TBST.

Detection: ECL Basic Kit (RM00020).

Exposure time: 90s.