

AP1090

Leader in Biomolecular Solutions for Life Science



## Phospho-FOXO1-S319 Rabbit pAb

Catalog No.: AP1090

### Basic Information

**Observed MW**

90kDa

**Calculated MW**

70kDa

**Category**

Mouse Monoclonal Antibody

**Applications**

WB, IHC-P, ELISA

**Cross-Reactivity**

Human, Mouse, Rat

### Background

This gene belongs to the forkhead family of transcription factors which are characterized by a distinct forkhead domain. The specific function of this gene has not yet been determined; however, it may play a role in myogenic growth and differentiation. Translocation of this gene with PAX3 has been associated with alveolar rhabdomyosarcoma.

### Recommended Dilutions

WB 1:500 - 1:2000

IHC-P 1:50 - 1:200

### Immunogen Information

**Gene ID**

2308

**Swiss Prot**

Q12778

**Immunogen**

A synthetic phosphorylated peptide around S319 of human FOXO1 (NP\_002006.2).

**Synonyms**

FKH1; FKHR; FOXO1A; Phospho-FOXO1-S319

### Contact



[www.abclonal.com](http://www.abclonal.com)

### Product Information

**Source**

Rabbit

**Isotype**

IgG

**Purification**

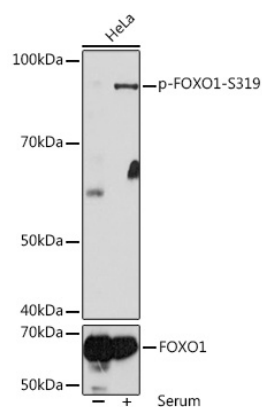
Affinity purification

**Storage**

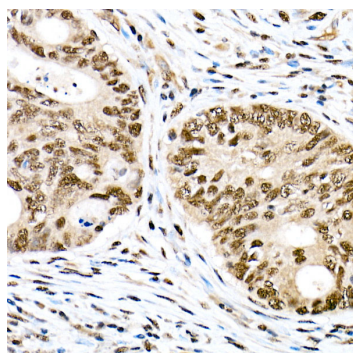
Store at -20°C. Avoid freeze / thaw cycles.

Buffer: PBS with 0.01% thimerosal, 50% glycerol, pH 7.3.

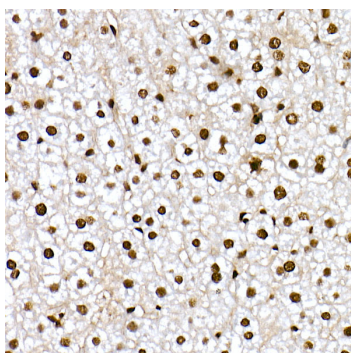
## Validation Data



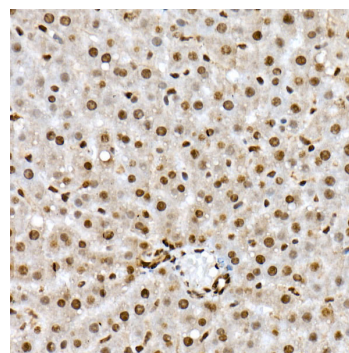
Western blot analysis of extracts of HeLa cells, using Phospho-FOXO1-S319 antibody (AP1090) at 1:1000 dilution or FOXO1 antibody (A13862). HeLa cells were treated by 10% FBS at 37°C for 30 minutes after serum-starvation overnight.  
Secondary antibody: HRP Goat Anti-Rabbit IgG (H+L) (AS014) at 1:10000 dilution.  
Lysates/proteins: 25µg per lane.  
Blocking buffer: 3% BSA.  
Detection: ECL Basic Kit (RM00020).  
Exposure time: 10s.



Immunohistochemistry analysis of paraffin-embedded human colon carcinoma using Phospho-FOXO1-S319 Rabbit pAb (AP1090) at dilution of 1:50 (40x lens). Perform high pressure antigen retrieval with 10 mM citrate buffer pH 6.0 before commencing with IHC staining protocol.



Immunohistochemistry analysis of paraffin-embedded mouse liver using Phospho-FOXO1-S319 Rabbit pAb (AP1090) at dilution of 1:50 (40x lens). Perform high pressure antigen retrieval with 10 mM citrate buffer pH 6.0 before commencing with IHC staining protocol.



Immunohistochemistry analysis of paraffin-embedded rat liver using Phospho-FOXO1-S319 Rabbit pAb (AP1090) at dilution of 1:50 (40x lens). Perform high pressure antigen retrieval with 10 mM citrate buffer pH 6.0 before commencing with IHC staining protocol.