

AP1061

Leader in Biomolecular Solutions for Life Science



Phospho-Cyclin D1-T286 Rabbit pAb

Catalog No.: AP1061

1 Publications

Basic Information

Observed MW

37kDa

Calculated MW

34kDa

Category

Polyclonal Antibody

Applications

WB, IHC-P, ELISA

Cross-Reactivity

Human, Mouse, Rat

Background

The protein encoded by this gene belongs to the highly conserved cyclin family, whose members are characterized by a dramatic periodicity in protein abundance throughout the cell cycle. Cyclins function as regulators of CDK kinases. Different cyclins exhibit distinct expression and degradation patterns which contribute to the temporal coordination of each mitotic event. This cyclin forms a complex with and functions as a regulatory subunit of CDK4 or CDK6, whose activity is required for cell cycle G1/S transition. This protein has been shown to interact with tumor suppressor protein Rb and the expression of this gene is regulated positively by Rb. Mutations, amplification and overexpression of this gene, which alters cell cycle progression, are observed frequently in a variety of human cancers.

Recommended Dilutions

WB	1:500 - 1:2000
IHC-P	1:50 - 1:200

Immunogen Information

Gene ID

595

Swiss Prot

P24385

Immunogen

A synthetic phosphorylated peptide around T286 of human Cyclin D1 (NP_444284.1).

Synonyms

BCL1; PRAD1; U21B31; D11S287E; Phospho-Cyclin D1-T286

Contact



www.abclonal.com

Product Information

Source

Rabbit

Isotype

IgG

Purification

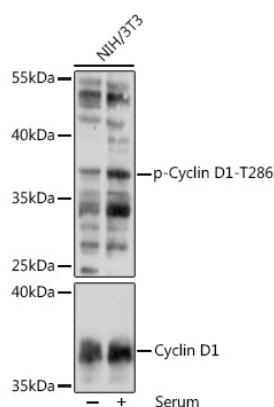
Affinity purification

Storage

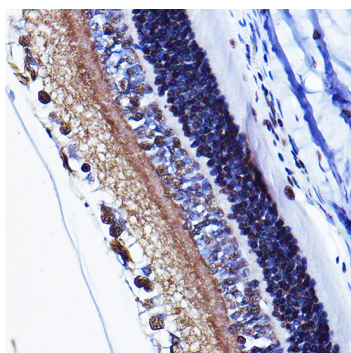
Store at -20°C. Avoid freeze / thaw cycles.

Buffer: PBS with 0.01% thimerosal, 50% glycerol, pH7.3.

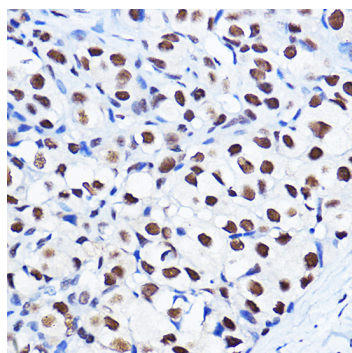
Validation Data



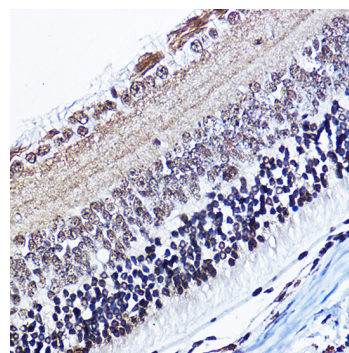
Western blot analysis of lysates from NIH/3T3 cells, using Phospho-Cyclin D1-T286 pAb (AP1061) at 1:1000 dilution or Cyclin D1 antibody (A11310). NIH/3T3 cells were treated by 10% FBS at 37°C for 30 minutes after serum-starvation overnight.
 Secondary antibody: HRP Goat Anti-Rabbit IgG (H+L) (AS014) at 1:10000 dilution.
 Lysates/proteins: 25µg per lane.
 Blocking buffer: 3% BSA.
 Detection: ECL Basic Kit (RM00020).
 Exposure time: 60s.



Immunohistochemistry analysis of Phospho-Cyclin D1-T286 in paraffin-embedded rat eye using Phospho-Cyclin D1-T286 Rabbit pAb (AP1061) at dilution of 1:100 (40x lens). Perform high pressure antigen retrieval with 10 mM citrate buffer pH 6.0 before commencing with IHC staining protocol.



Immunohistochemistry analysis of Phospho-Cyclin D1-T286 in paraffin-embedded human breast cancer using Phospho-Cyclin D1-T286 Rabbit pAb (AP1061) at dilution of 1:100 (40x lens). Perform high pressure antigen retrieval with 10 mM citrate buffer pH 6.0 before commencing with IHC staining protocol.



Immunohistochemistry analysis of Phospho-Cyclin D1-T286 in paraffin-embedded mouse eye using Phospho-Cyclin D1-T286 Rabbit pAb (AP1061) at dilution of 1:100 (40x lens). Perform high pressure antigen retrieval with 10 mM citrate buffer pH 6.0 before commencing with IHC staining protocol.