

AP1014

Leader in Biomolecular Solutions for Life Science



Phospho-Cyclin E1-T77 Rabbit mAb

Catalog No.: AP1014

Recombinant

Basic Information

Observed MW

48kDa

Calculated MW

47kDa

Category

SMab Recombinant Monoclonal Antibody

Applications

WB, ELISA

Cross-Reactivity

Mouse

CloneNo number

ARC1559

Background

The protein encoded by this gene belongs to the highly conserved cyclin family, whose members are characterized by a dramatic periodicity in protein abundance through the cell cycle. Cyclins function as regulators of CDK kinases. Different cyclins exhibit distinct expression and degradation patterns which contribute to the temporal coordination of each mitotic event. This cyclin forms a complex with and functions as a regulatory subunit of CDK2, whose activity is required for cell cycle G1/S transition. This protein accumulates at the G1-S phase boundary and is degraded as cells progress through S phase. Overexpression of this gene has been observed in many tumors, which results in chromosome instability, and thus may contribute to tumorigenesis. This protein was found to associate with, and be involved in, the phosphorylation of NPAT protein (nuclear protein mapped to the ATM locus), which participates in cell-cycle regulated histone gene expression and plays a critical role in promoting cell-cycle progression in the absence of pRB.

Recommended Dilutions

WB 1:500 - 1:1000

Immunogen Information

Gene ID

898

Swiss Prot

P24864

Immunogen

A synthetic phosphorylated peptide around T77 of human Cyclin E1 (P24864).

Synonyms

CCNE; pCCNE1; Phospho-Cyclin E1-T77

Contact



www.abclonal.com

Product Information

Source

Rabbit

Isotype

IgG

Purification

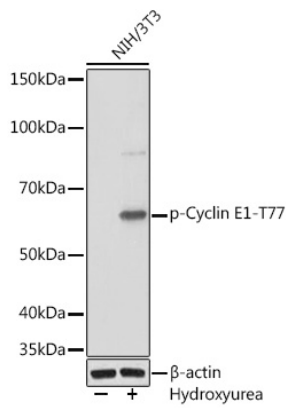
Affinity purification

Storage

Store at -20°C. Avoid freeze / thaw cycles.

Buffer: PBS with 0.02% sodium azide, 0.05% BSA, 50% glycerol, pH 7.3.

Validation Data



Western blot analysis of extracts of NIH/3T3 cells, using Phospho-Cyclin E1-T77 Rabbit mAb (AP1014) at 1:1000 dilution. NIH/3T3 cells were treated by Hydroxyurea (4 Mm) at 37°C for 20 hours.
Secondary antibody: HRP Goat Anti-Rabbit IgG (H+L) (AS014) at 1:10000 dilution.
Lysates/proteins: 25µg per lane.
Blocking buffer: 3% BSA.
Detection: ECL Basic Kit (RM00020).
Exposure time: 3min.