

AP0990

Leader in Biomolecular Solutions for Life Science



## Phospho-c-Myc-T58 Rabbit mAb

Catalog No.: AP0990

Recombinant

1 Publications

### Basic Information

#### Observed MW

57kDa

#### Calculated MW

51kDa

#### Category

SMab Recombinant Monoclonal Antibody

#### Applications

WB, ELISA

#### Cross-Reactivity

Human

#### CloneNo number

ARC1534

### Background

This gene is a proto-oncogene and encodes a nuclear phosphoprotein that plays a role in cell cycle progression, apoptosis and cellular transformation. The encoded protein forms a heterodimer with the related transcription factor MAX. This complex binds to the E box DNA consensus sequence and regulates the transcription of specific target genes. Amplification of this gene is frequently observed in numerous human cancers. Translocations involving this gene are associated with Burkitt lymphoma and multiple myeloma in human patients. There is evidence to show that translation initiates both from an upstream, in-frame non-AUG (CUG) and a downstream AUG start site, resulting in the production of two isoforms with distinct N-termini.

### Recommended Dilutions

WB 1:500 - 1:1000

### Immunogen Information

#### Gene ID

4609

#### Swiss Prot

P01106

#### Immunogen

A synthetic phosphorylated peptide around T58 of human c-Myc (P01106).

#### Synonyms

MRTL; MYCC; c-Myc; bHLHe39; Phospho-c-Myc-T58

### Contact



[www.abclonal.com](http://www.abclonal.com)

### Product Information

#### Source

Rabbit

#### Isotype

IgG

#### Purification

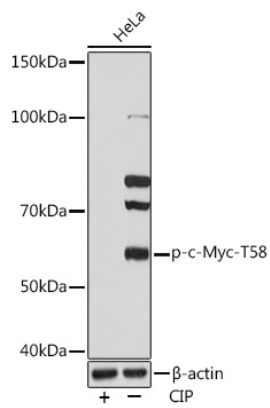
Affinity purification

#### Storage

Store at -20°C. Avoid freeze / thaw cycles.

Buffer: PBS with 0.02% sodium azide, 0.05% BSA, 50% glycerol, pH 7.3.

## Validation Data



Western blot analysis of extracts of HeLa cells, using Phospho-c-Myc-T58 Rabbit mAb (AP0990) at 1:1000 dilution. HeLa cells were treated by CIP(20uL/400ul) at 37°C for 1 hour.  
Secondary antibody: HRP Goat Anti-Rabbit IgG (H+L) (AS014) at 1:10000 dilution.  
Lysates/proteins: 25µg per lane.  
Blocking buffer: 3% BSA.  
Detection: ECL Basic Kit (RM00020).  
Exposure time: 10s.