

AP0948

Leader in Biomolecular Solutions for Life Science



Phospho-AURKA-T288/AURKB-T232/AURKC-T198 Rabbit pAb

Catalog No.: AP0948

Basic Information

Observed MW

35KkDa/48kDa

Calculated MW

Category

Polyclonal Antibody

Applications

WB, ELISA

Cross-Reactivity

Human, Rat

Background

The protein encoded by this gene is a cell cycle-regulated kinase that appears to be involved in microtubule formation and/or stabilization at the spindle pole during chromosome segregation. The encoded protein is found at the centrosome in interphase cells and at the spindle poles in mitosis. This gene may play a role in tumor development and progression. A processed pseudogene of this gene has been found on chromosome 1, and an unprocessed pseudogene has been found on chromosome 10. Multiple transcript variants encoding the same protein have been found for this gene. [provided by RefSeq, Jul 2008]

Recommended Dilutions

WB 1:500 - 1:2000

Immunogen Information

Gene ID

6790/9212/6795

Swiss Prot

O14965/Q96GD4/Q9UQB9

Immunogen

A synthetic phosphorylated peptide around T288 of human AURKA/AURKB/AURKCAURKA (NP_003591.2).

Synonyms

AURKA/AURKB/AURKC; Phospho-AURKA-T288/AURKB-T232/AURKC-T198

Contact



www.abclonal.com

Product Information

Source

Rabbit

Isotype

IgG

Purification

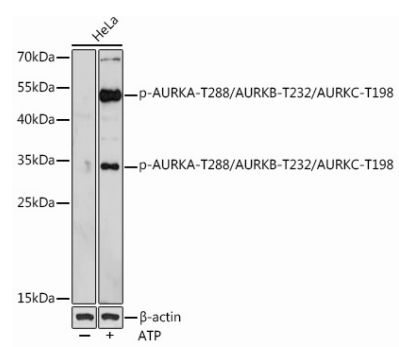
Affinity purification

Storage

Store at -20°C. Avoid freeze / thaw cycles.

Buffer: PBS with 0.01% thimerosal, 50% glycerol, pH7.3.

Validation Data



Western blot analysis of lysates from HeLa cells, using Phospho-AURKA-T288/AURKB-T232/AURKC-T198 Rabbit pAb (AP0948) at 1:1000 dilution. HeLa cells were treated by ATP (5 mM) at 30°C for 1 hour. Secondary antibody: HRP Goat Anti-Rabbit IgG (H+L) (AS014) at 1:10000 dilution. Lysates/proteins: 25 µg per lane. Blocking buffer: 3% BSA. Detection: ECL Basic Kit (RM00020). Exposure time: 90s.