

AP0913

Leader in Biomolecular Solutions for Life Science



Phospho-ATF2-T69/71 Rabbit pAb

Catalog No.: AP0913

Basic Information

Observed MW

70kDa

Calculated MW

55kDa

Category

Polyclonal Antibody

Applications

WB,IHC-P,ELISA

Cross-Reactivity

Human,Mouse,Rat

Background

This gene encodes a transcription factor that is a member of the leucine zipper family of DNA binding proteins. The encoded protein has been identified as a moonlighting protein based on its ability to perform mechanistically distinct functions. This protein binds to the cAMP-responsive element (CRE), an octameric palindrome. It forms a homodimer or a heterodimer with c-Jun and stimulates CRE-dependent transcription. This protein is also a histone acetyltransferase (HAT) that specifically acetylates histones H2B and H4 in vitro; thus it may represent a class of sequence-specific factors that activate transcription by direct effects on chromatin components. The encoded protein may also be involved in cell's DNA damage response independent of its role in transcriptional regulation. Several alternatively spliced transcript variants have been found for this gene

Recommended Dilutions

WB	1:500 - 1:2000
IHC-P	1:50 - 1:200

Immunogen Information

Gene ID

1386

Swiss Prot

P15336

Immunogen

A synthetic phosphorylated peptide around T69 & T71 of human ATF2 (NP_001871.2?).

Synonyms

HB16; CREB2; TREB7; CREB-2; CRE-BP1; Phospho-ATF2-T69/71

Contact



www.abclonal.com

Product Information

Source

Rabbit

Isotype

IgG

Purification

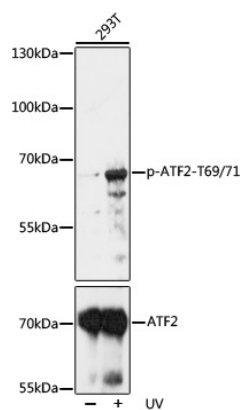
Affinity purification

Storage

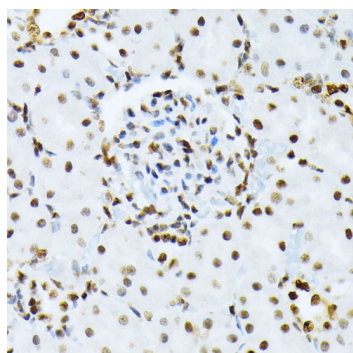
Store at -20°C. Avoid freeze / thaw cycles.

Buffer: PBS with 0.01% thimerosal, 50% glycerol, pH7.3.

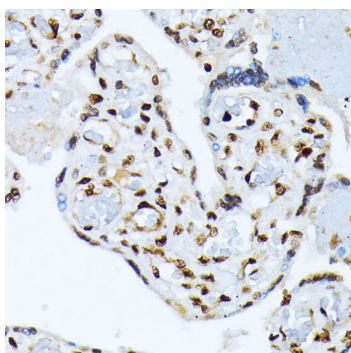
Validation Data



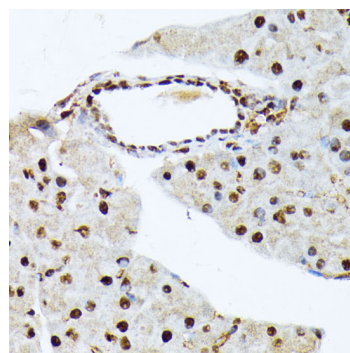
Western blot analysis of lysates from NIH/3T3 cells, using Phospho-ATF2-T69/71 Rabbit pAb (A2155). 293T cells were treated by UV at room temperature for 15-30 minutes.
 Secondary antibody: HRP Goat Anti-Rabbit IgG (H+L) (AS014) at 1:10000 dilution.
 Lysates/proteins: 25µg per lane.
 Blocking buffer: 3% BSA.
 Detection: ECL Basic Kit (RM00020).
 Exposure time: 180s.



Immunohistochemistry analysis of Phospho-ATF2-T69/71 in paraffin-embedded rat kidney using Phospho-ATF2-T69/71 Rabbit pAb (AP0913) at dilution of 1:100 (40x lens). Perform microwave antigen retrieval with 10 mM Tris/EDTA buffer pH 9.0 before commencing with IHC staining protocol.



Immunohistochemistry analysis of Phospho-ATF2-T69/71 in paraffin-embedded human placenta using Phospho-ATF2-T69/71 Rabbit pAb (AP0913) at dilution of 1:100 (40x lens). Perform microwave antigen retrieval with 10 mM Tris/EDTA buffer pH 9.0 before commencing with IHC staining protocol.



Immunohistochemistry analysis of Phospho-ATF2-T69/71 in paraffin-embedded mouse pancreas using Phospho-ATF2-T69/71 Rabbit pAb (AP0913) at dilution of 1:100 (40x lens). Perform microwave antigen retrieval with 10 mM Tris/EDTA buffer pH 9.0 before commencing with IHC staining protocol.