

AP0433

Leader in Biomolecular Solutions for Life Science



Phospho-PKC zeta-T410 Rabbit pAb

Catalog No.: AP0433

Basic Information

Observed MW

85kDa

Calculated MW

68kDa

Category

Polyclonal Antibody

Applications

WB, ELISA

Cross-Reactivity

Human, Mouse, Rat

Background

Protein kinase C (PKC) zeta is a member of the PKC family of serine/threonine kinases which are involved in a variety of cellular processes such as proliferation, differentiation and secretion. Unlike the classical PKC isoenzymes which are calcium-dependent, PKC zeta exhibits a kinase activity which is independent of calcium and diacylglycerol but not of phosphatidylserine. Furthermore, it is insensitive to typical PKC inhibitors and cannot be activated by phorbol ester. Unlike the classical PKC isoenzymes, it has only a single zinc finger module. These structural and biochemical properties indicate that the zeta subspecies is related to, but distinct from other isoenzymes of PKC. Alternative splicing results in multiple transcript variants encoding different isoforms.

Recommended Dilutions

WB 1:100 - 1:500

Immunogen Information

Gene ID

5590

Swiss Prot

Q05513

Immunogen

A phospho specific peptide corresponding to residues surrounding T410 of human PKC (pan) (zeta).

Synonyms

PKC2; PKC-ZETA; Phospho-PKC zeta-T410

Contact



www.abclonal.com

Product Information

Source

Rabbit

Isotype

IgG

Purification

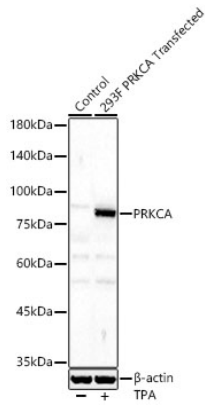
Affinity purification

Storage

Store at -20°C. Avoid freeze / thaw cycles.

Buffer: PBS with 0.02% sodium azide, 50% glycerol, pH 7.3.

Validation Data



Western blot analysis of lysates from wild type (WT) and 293T cells transfected with PRKCA were treated by TPA (200 nM) at 37°C for 30 minutes after serum-starvation overnight, using Phospho-PRKCA-T410 Rabbit pAb (AP0433) at 1:400 dilution.

Secondary antibody: HRP Goat Anti-Rabbit IgG (H+L) (AS014) at 1:10000 dilution.

Lysates/proteins: 25µg per lane.

Blocking buffer: 3% nonfat dry milk in TBST.

Detection: ECL Basic Kit (RM00020).

Exposure time: 180s.